



Making a world of difference
in small-scale gold mining.

A GEF Initiative

9 September 2025

Monitoring landscape-level outcomes

How LandScale can support JA/LA
in Artisanal Small-scale Gold
Mining (ASGM)

Supported by:



Led by:



In partnership with:



UNITED NATIONS
INDUSTRIAL DEVELOPMENT ORGANIZATION



CONSERVATION
INTERNATIONAL





planetGOLD works to make small-scale gold mining safer, cleaner, and more profitable. Our vision is a clean global supply of gold from small-scale miners.

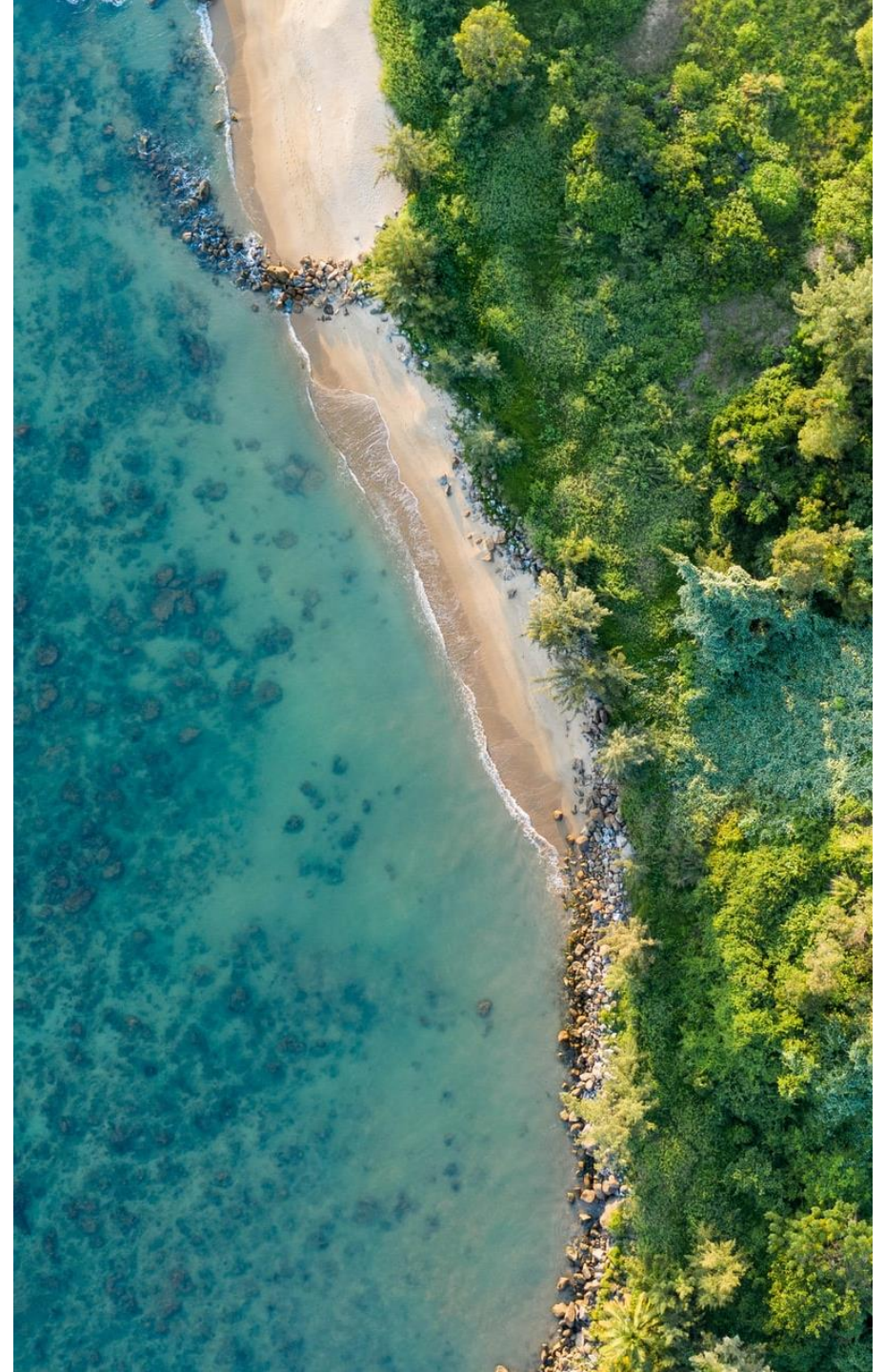
Agenda

- ▶ Welcome, introductions and session overview
 - ▶ Refresher: Introducing LandScale and platform demo
 - ▶ LandScale's holistic landscape assessment framework
 - ▶ Potential applications and links to ASGM.
 - ▶ Short break
 - ▶ Breakout groups: Indicators and metrics for ASGM
 - ▶ Plenary and discussion
 - ▶ Case study: LandScale in practice
 - ▶ Preparation for session 2
-



Housekeeping rules for a collaborative learning space

- ▶ Where possible, keep your video on
- ▶ Keep your microphone on mute (unless you want to talk!)
- ▶ Use the chat function and reactions freely
- ▶ Ask questions
- ▶ Enjoy!



Meet the team



Hannah Grice

Operations Manager
LandScale



Arturo Tovar

Business Development &
Innovation Manager
LandScale



Guest speaker

TBD



Intended Learning Outcomes

After this webinar, participants are able to:

- ▶ Gain a deeper understanding of how LandScale can support outcome monitoring, and why this is useful for ASGM
- ▶ Gain an understanding of the LandScale assessment framework
- ▶ Identify key indicators and metrics relevant to sustainable ASGM
- ▶ Independently set up landscape profiles on the LandScale platform



Menti poll

Icebreaker question: “What’s the first word or phrase that comes to mind when you hear *landscape sustainability*?”

1. Before today, had you heard of LandScale?

Yes / No

2. How familiar are you with LandScale’s purpose?

Not at all – A little – Somewhat – Very

3. Have you ever used the platform yourself?

Yes, regularly / Yes, occasionally / No

4. What tools do you currently use to facilitate landscape monitoring, if any?

None - Desktop applications (e.g. GIS, Excel) - Online platform - Other (please specify)

5. In one word, what do you hope this platform can help you achieve?



Vision

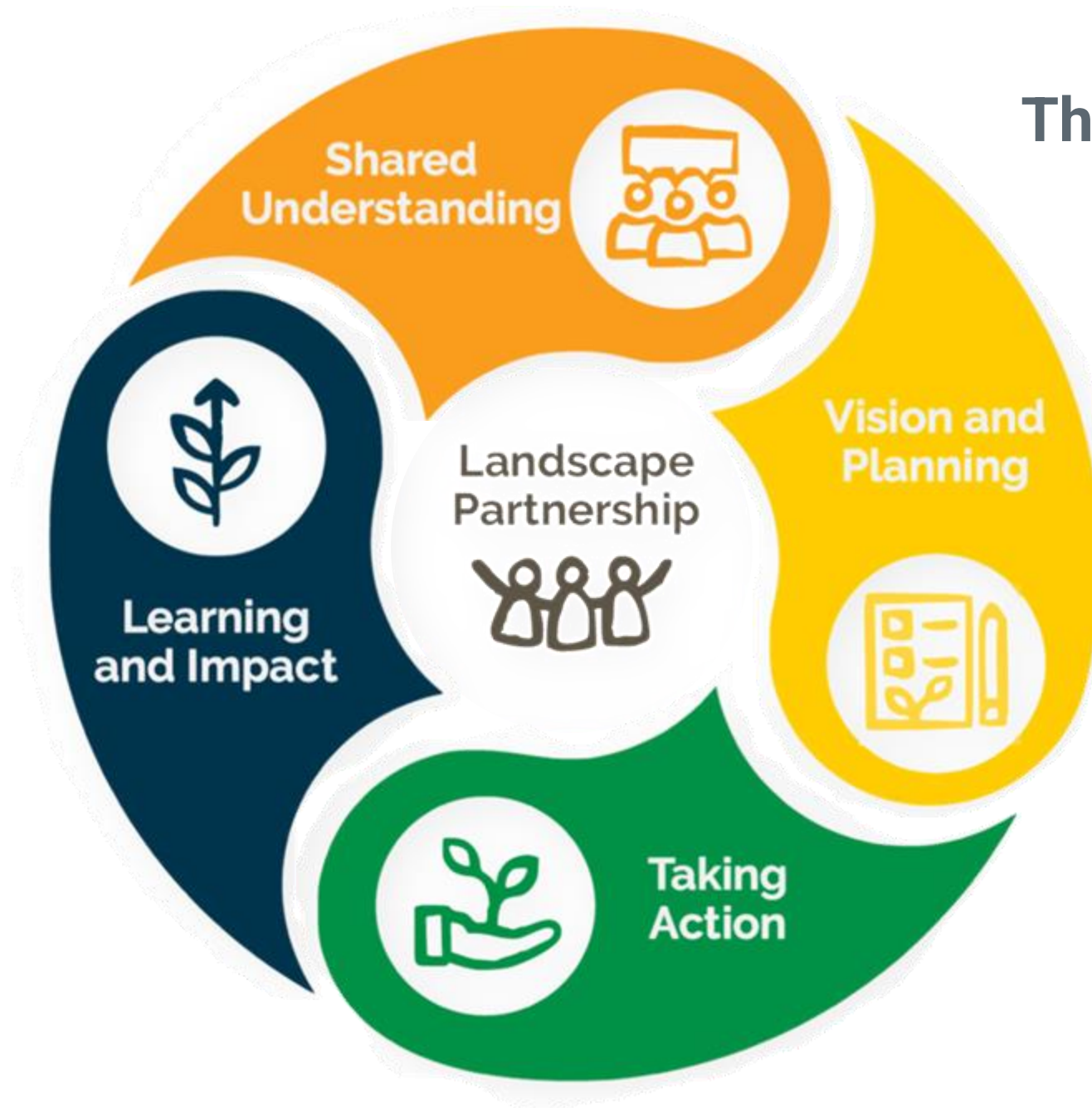
A future where people, nature and business prosper through sustainable landscape management.

Mission

LandScale equips local and global landscape stakeholders to access and report reliable information about landscape management and sustainability performance, enabling them to design and target interventions to deliver greater impact at scale.



The ILM elements





How can LandScale help you?

- ▶ Stakeholder Engagement Plan Template
- ▶ Many assessments acknowledge the significance of establishing robust relationships with stakeholders in landscapes.
- ▶ LandScale has developed a template to help you identify stakeholders and build plans to foster these relationships as part of the LS assessment. We review this template and make comments for improvements.



How can LandScale help you?

- ▶ Users who start their baseline assessments identify landscape stakeholders and conduct workshops with them.
- ▶ While the primary objective is to access official data or reports to assess indicators, an additional outcome emerges: the creation of a platform for coordination and results socialization.
- ▶ Through these workshops, users begin to identify the issues within the landscape, fostering collaboration and problem-solving efforts.

Shared
Understanding





How can LandScale help you?

- ▶ During the early stages of the assessment, stakeholders and assessment leaders engage in workshops to envision the landscape's future.
- ▶ These collaborative workshops provide an opportunity for stakeholders to express their goals for the medium and long term, and participants contribute to shaping a collective vision for the landscape's sustainability.





How can LandScale help you?

- ▶ After finishing the baseline assessment and obtaining data, many users have found value in developing action plans.
- ▶ These action plans entail setting goals jointly with other landscape stakeholders in order to achieve positive changes within the landscape.





How can LandScale help you?

- ▶ One of LandScale's purposes is to undertake re-assessments to monitor changes or trends over time.
- ▶ This holistic or comprehensive approach enables users to assess how their efforts have influenced change in the landscape and adjust their plans accordingly to achieve the goals.

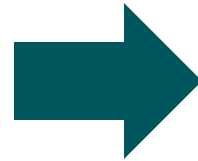


Importance of monitoring in a holistic way

Challenges

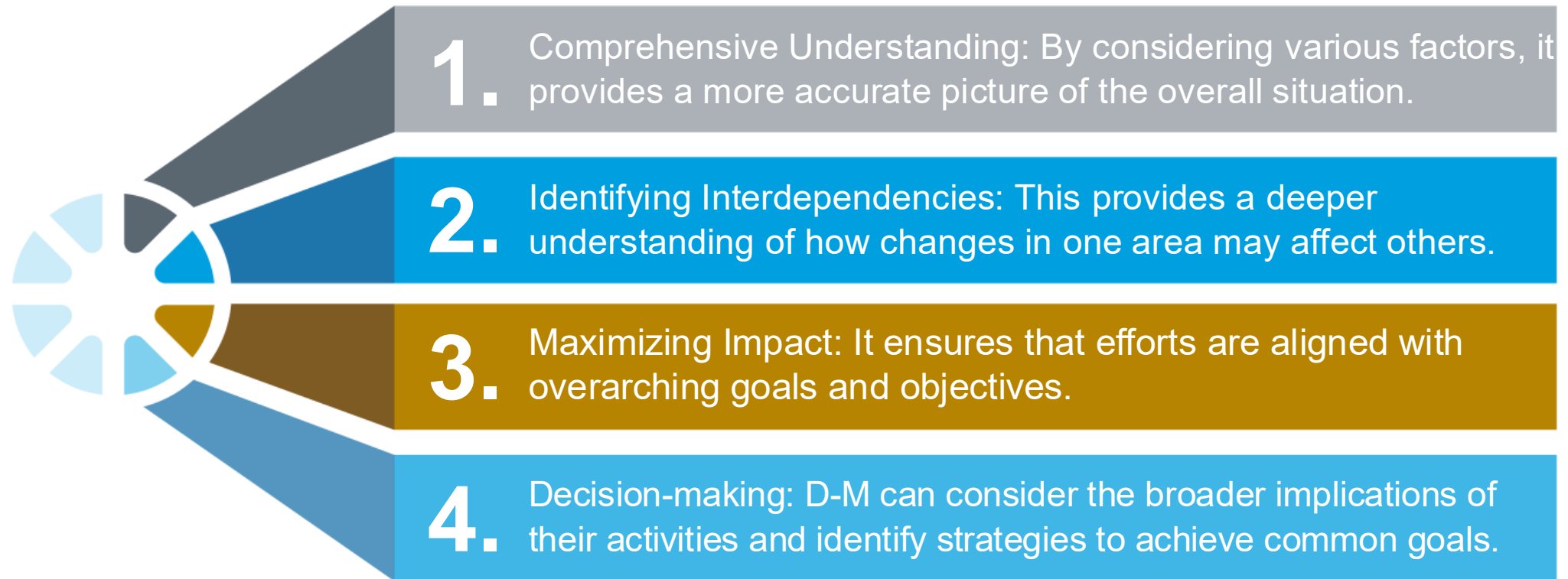
- ▶ It is important to recognize the interdependence between environmental and socioeconomic issues.
- ▶ Attempting to deal with these challenges independently reduces our capacity to achieve the desired results.





- ▶ Major challenges require innovative ways of thinking and working. As a result, there is a current need for a holistic approach, such as the one proposed by LandScale.

Let's recap





Introduction to LandScale

A platform for monitoring and communicating impact at the
landscape level

Who Is Behind LandScale?

Steering
group



Foundational
partners



New
partners

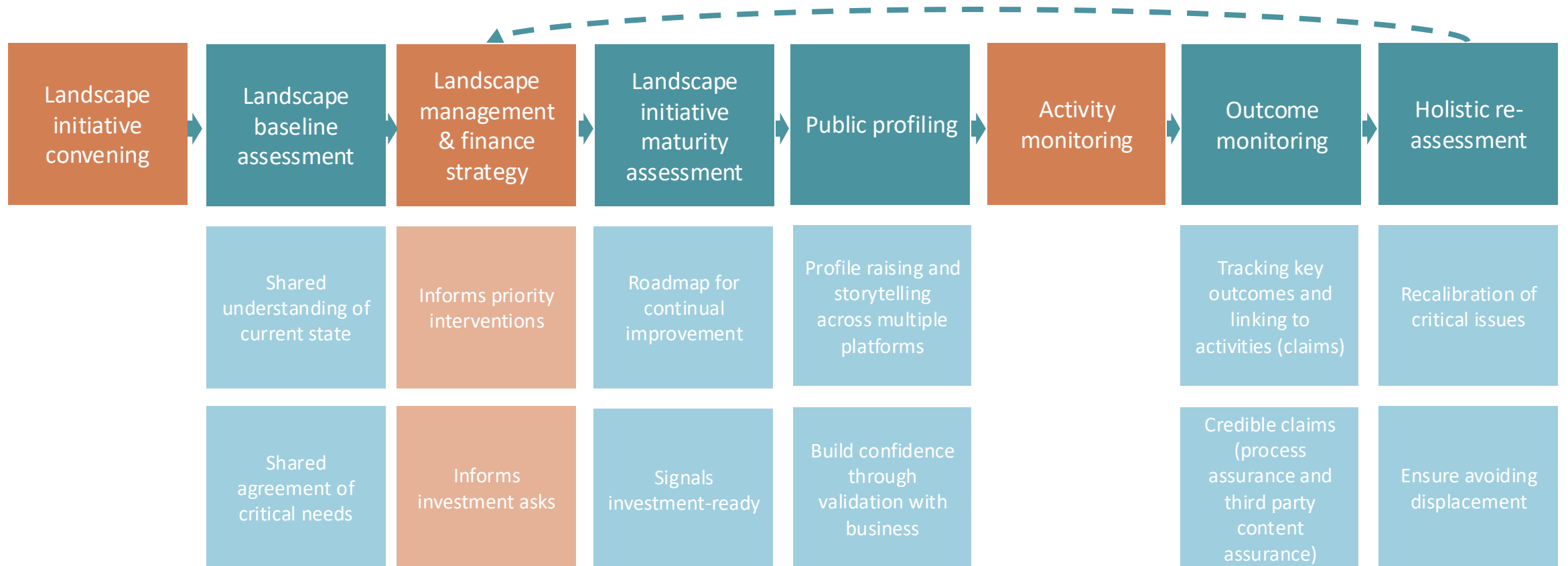


Donors



Landscape initiative journey

For continual improvement in landscape monitoring and ILM



LandScale: raising the standard

Health of the landscape:
LandScale assessment

Ecosystems / human wellbeing / governance / production



Measure changes over time (outcomes)

Indicator packages

Health of the landscape initiative:
Landscape Initiative Maturity

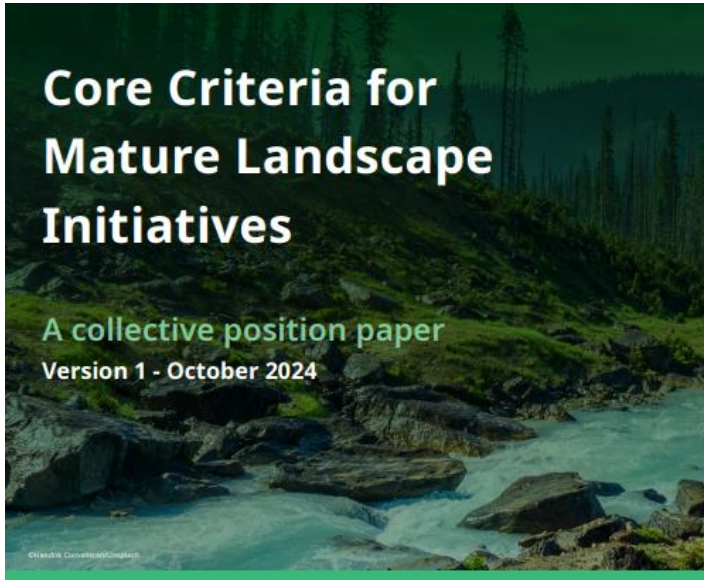
Scale / multi-stakeholder governance / collective goal & actions / collective monitoring



Roadmap for continual improvement



Landscape Initiative Maturity



1. Scale:

The landscape initiative operates at the scale of a defined ecological, socioeconomic, or administrative area, e.g. a watershed or jurisdictional boundary.



2. Multi-stakeholder governance process or platform⁵:

The landscape initiative is governed by a multi-stakeholder process or platform that has decision-making responsibility for the design, implementation, and monitoring of the initiative⁶.



3. Collective goals and actions⁷:

Stakeholders in the landscape initiative have agreed on a set of long-term landscape-scale sustainability impact goals and a collective action plan for achieving those goals⁸.



4. Collective monitoring⁹:

The landscape initiative manages a collective monitoring and reporting framework that enables assessment and communication of progress towards the initiative's collective sustainability impact goals.

Our solution: LandScale's integrated system



Assessment Framework

Conduct an assessment using the holistic framework and guidance on the online platform.



Validation Mechanism

Gain more confidence in your insights through local review and LandScale validation.



Online Platform

Share your results on the public-facing side of platform and make credible claims.

What LandScale can do for you

Landscape initiatives

Evaluate the maturity of your landscape initiative

Create your profile and validate the maturity of your initiative against core criteria aligned to key reporting frameworks including SBTN and CDP.

Identify risks and opportunities

Understand landscape trends that can inform decision-making and drive positive impact.

Showcase your impact

Credibly communicate your results, attracting additional partners and support for your landscape initiative.

Landscape supporters

Engage with landscape initiatives

Use our Landscape Explorer to connect with landscapes you are sourcing from or want to invest in. Find validated information on landscape maturity aligned with CDP, SBTN and others.

Get the full picture

Find out more about the status of landscapes, the actions being taken to improve sustainability, and what support is needed to create real change.

Support landscapes on their journey to resilience

Identify landscapes seeking support and help them to scale their impact through targeted investment.

LandScale users worldwide



35+ landscapes being assessed in over 20 countries



Lamas

Location: Peru

Size: 200,000 ha

Main economic activities:
Agriculture, forestry and animal farming



Alicante River Canyon

Location: Colombia

Size: 111,187 ha

Main economic activities:
Agriculture, forestry and animal farming



Haut Niger

Location: Mali

Size: 9,929,800 ha

Main economic activities:
Agriculture, mining,
manufacturing



Krong Nang district, Daklak

Location: Vietnam

Size: 62,000 ha

Main economic activities:
Agriculture, forestry and animal farming



Coconut Landscape of Alabel, Malapatan, Malungon, Polomolok, Tampakan, and Tupi

Location: Philippines

Size: 297,174 ha

Main economic activities:
agriculture and agri-related activities/services

Conduct an assessment using LandScale



Assessment Framework

Conduct an assessment using the holistic framework and guidance on the online platform.



Validation Mechanism

Gain more confidence in your insights through local review and LandScale validation.






Online Platform

Share your results on the public-facing side of platform and make credible claims.

Assessment Framework



Ecosystems

Conserve and restore natural ecosystems	
Effective conservation and protection of natural ecosystems	<input checked="" type="checkbox"/>
Natural ecosystem conversion	<input checked="" type="checkbox"/>
Natural ecosystem degradation	<input checked="" type="checkbox"/>
Ecosystem restoration	<input checked="" type="checkbox"/>
Natural ecosystem connectivity	<input checked="" type="checkbox"/>
Protect and restore biodiversity	
Threats to species	<input checked="" type="checkbox"/>
Biodiversity habitat conversion	<input checked="" type="checkbox"/>
Biodiversity habitat degradation	<input type="checkbox"/>
Biodiversity habitat restoration	<input type="checkbox"/>
Biodiversity habitat protection	<input checked="" type="checkbox"/>
Protect and restore natural ecosystems	
Water quantity	<input checked="" type="checkbox"/>
Water quality	<input checked="" type="checkbox"/>
Agriculture, forestry, and other land-use (AFOLU) sector GHG sources and sinks	<input checked="" type="checkbox"/>
Other ecosystem services	<input type="checkbox"/>



Human Well-Being

Improve standard of living, especially for vulnerable and/or marginalized groups	
Household income and assets	<input checked="" type="checkbox"/>
Health and nutrition	<input checked="" type="checkbox"/>
Education	<input checked="" type="checkbox"/>
Water, sanitation, and hygiene	<input checked="" type="checkbox"/>
Basic infrastructure	<input checked="" type="checkbox"/>
Vulnerability	<input type="checkbox"/>
Respect, protect, and fulfill human rights	
Child labor	<input checked="" type="checkbox"/>
Women's rights	<input checked="" type="checkbox"/>
Indigenous peoples 'and other marginalized groups' rights	<input checked="" type="checkbox"/>
Forced labor	<input checked="" type="checkbox"/>
Workers' rights	<input checked="" type="checkbox"/>
Other human rights	<input checked="" type="checkbox"/>

Governance

Recognize and protect rights to land and resources, and reduce related conflicts	
Land tenure	<input checked="" type="checkbox"/>
Land conflicts	<input checked="" type="checkbox"/>
Resources tenure	<input type="checkbox"/>
Promote transparency, participation, inclusion and coordination in landscape policy, planning, and management	
Land-use plan adoption and enforcement	<input checked="" type="checkbox"/>
Coordination of government agencies in land-use policy, planning, and management	<input checked="" type="checkbox"/>
Stakeholder Participation and inclusion in land-use policy, planning, and management	<input checked="" type="checkbox"/>
Illegality and corruption related to land and resources	<input checked="" type="checkbox"/>
Climate change vulnerability and adaptation	<input checked="" type="checkbox"/>

Production

Promote regenerative agricultural, agroforestry, and tree production systems	
Agricultural, agroforestry, and tree plantation productivity	<input checked="" type="checkbox"/>
Input use efficiency in agricultural, agroforestry, and tree production systems	<input checked="" type="checkbox"/>
Adoption of sustainable land management practices	<input type="checkbox"/>
Adoption of sustainable waste management practices	<input type="checkbox"/>
Promote sustainability of other natural resource-based production sectors	
User-defined indicator(s)	<input type="checkbox"/>

Conduct an assessment using LandScale



Assessment Framework

Conduct an assessment using the holistic framework and guidance on the online platform.



Validation Mechanism

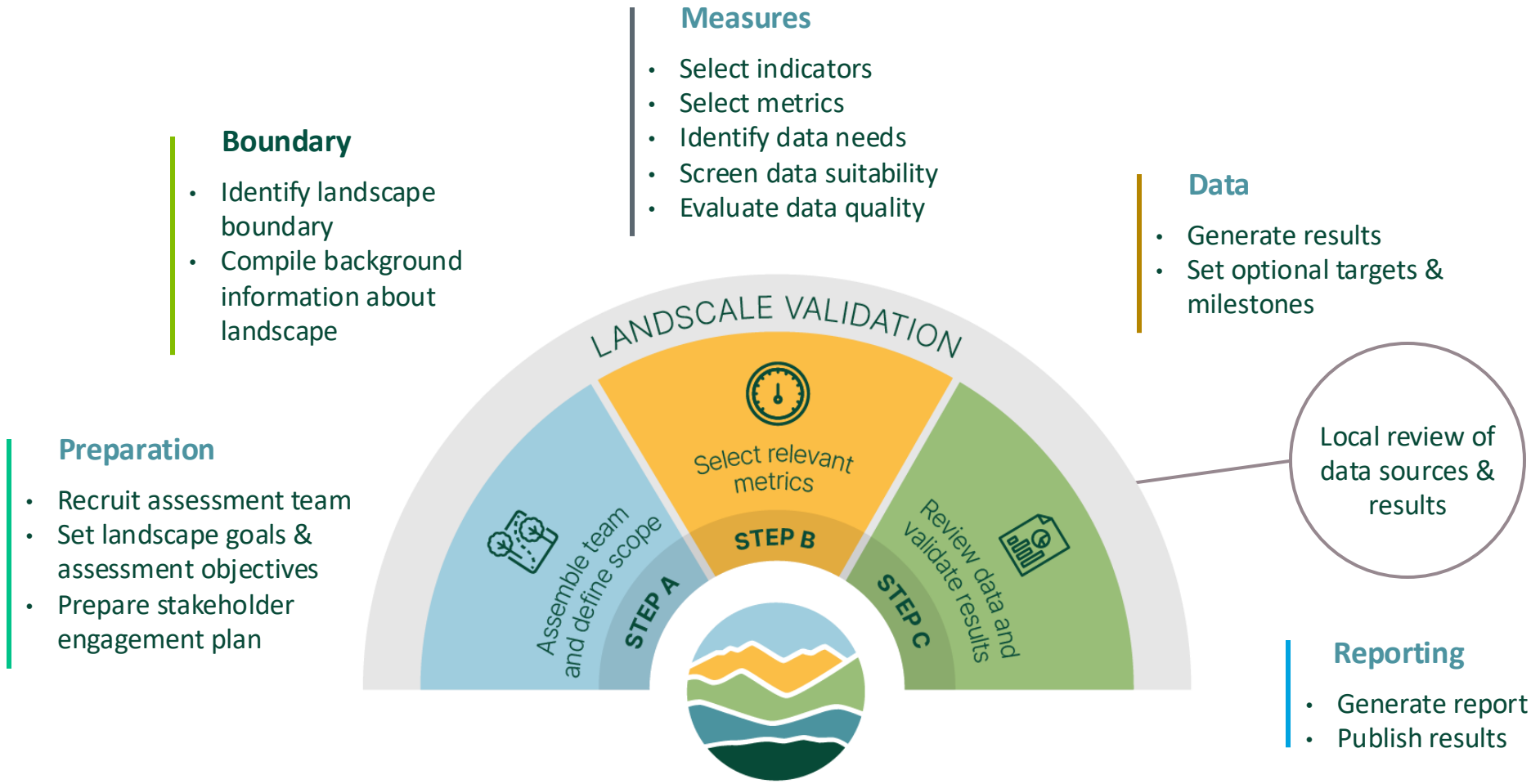
Gain more confidence in your insights through local review and LandScale validation.



Online Platform

Share your results on the public-facing side of platform and make credible claims.

Here's How It Works



Our two-step validation process



LandScale validation

The LandScale team carry out a review after each step of the assessment is completed to check that:

- 1 The LandScale guidelines have been followed
- 2 The data used is of sufficient quality

This process enable decision-makers to place a high degree of trust in the accuracy of the assessment results.



Local review

For each result, someone with expertise in the subject matter and knowledge of the region conducts a review to determine if:

- 1 The data used is suitable
- 2 The results reflect the actual conditions in the landscape

Conduct an assessment using LandScale



Assessment Framework

Conduct an assessment using the holistic framework and guidance on the online platform.



Validation Mechanism

Gain more confidence in your insights through local review and LandScale validation.



Online Platform

Share your results on the public-facing side of platform and make credible claims.



Landscapes

Type to search by name, country or organi:



Mexico

Sierra Volcanica Biocultural Landscape

Government of Jalisco



Peru

San Martín

Rainforest Alliance



Mali

Sikasso-landscape

Netherlands Development Organization (SNV)



Cameroon

Landscape Management Boards of the Western Highlands of Cameroon

Landscape Management Boards of the Western Highlands of Cameroon



More about our work





Landscapes

sierra



Mexico

Sierra Volcanica Biocultural Landscape

Government of Jalisco

Metric selection in progress



Landscape assessments

Landscape Initiative Maturity

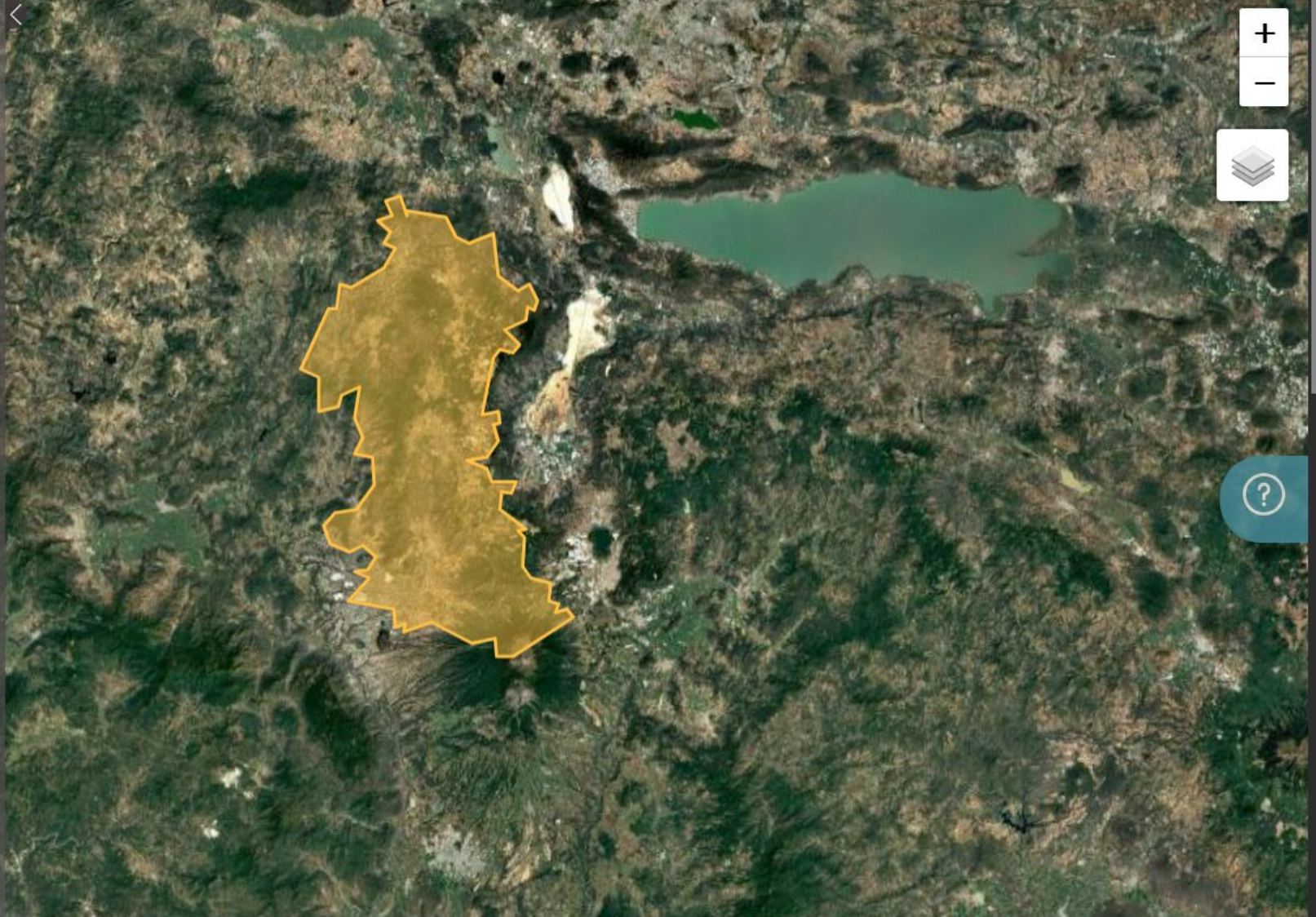
Other berries...

Potatoes

Avocados

+2

View profile



More about our work



An aerial photograph of a tropical coastline. The left side shows clear, turquoise water with several large, dark rocks scattered throughout. A narrow, sandy beach runs along the coast, bordered by a rocky shoreline. To the right of the beach is a dense, lush green forest. A winding, light-colored path or road is visible, snaking through the trees. The overall scene is bright and vibrant, suggesting a sunny day.

Short break

5 min

Application of LandScale to support LA/JAs in the context of ASGM



LandScale in Rupununi, Guyana

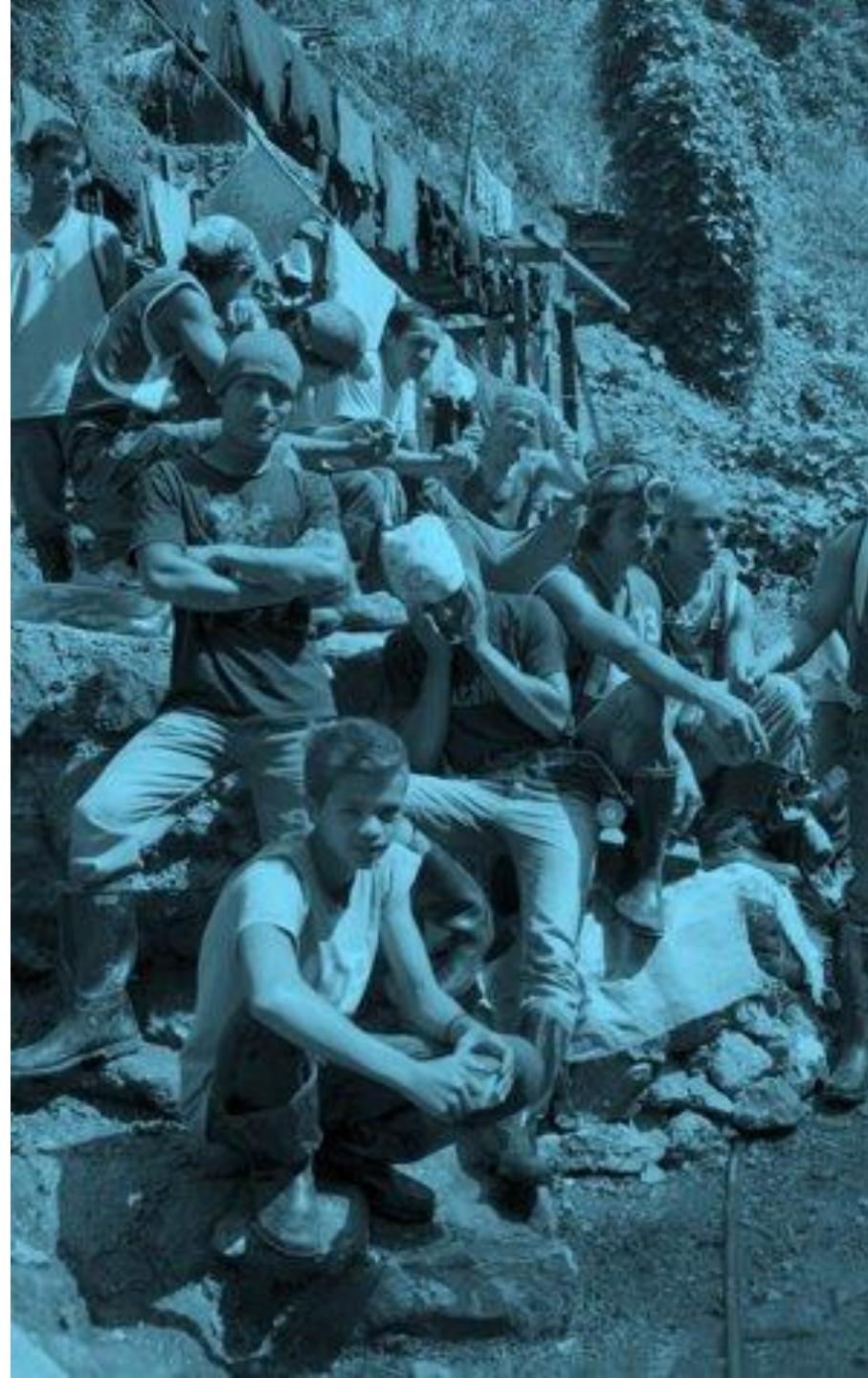
- ▶ Assessment being led by Conservation International
- ▶ The government will be part of the process and the goal is that they take over the monitoring responsibility in the future
- ▶ Inclusion of thematic roundtables with multisectoral participants (Including ASGM)
- ▶ ASGM: Focus on how to make a part of the profits remain in the landscape and ensure the extraction process is responsible and efficient, which translates into cost cutting and a decrease in negative effects on the ecosystem.

Lessons learned from other landscapes in Guyana

-ASGM needs to build partnerships and be at the landscape stakeholders table, so concerns and needs from the sector can be raised and be part of an integrated solution.

-Important to go over the action plan together with the other relevant actors, so it can reflect the real needs and situation of the landscape.

-An inclusive approach helps drive artisanal and small-scale gold miners from informality, bringing benefits such as improved livelihoods and ecosystem conservation.

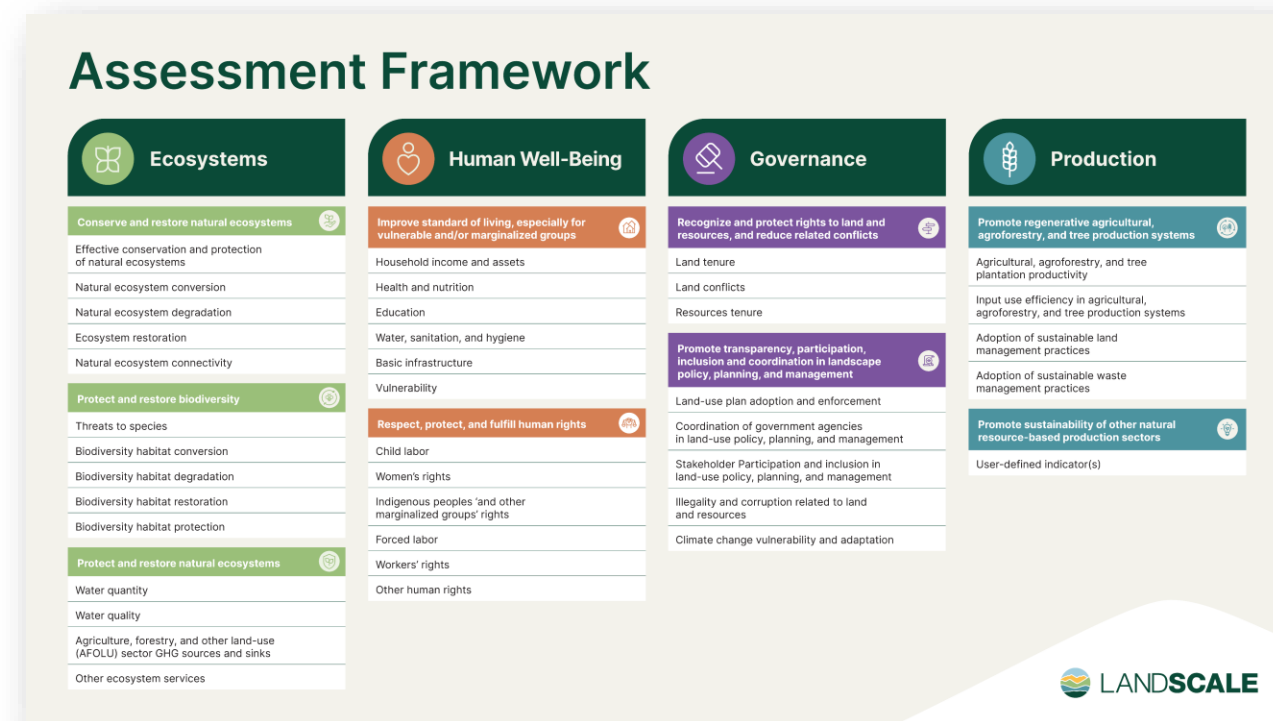


Key benefits of conducting a LandScale assessment for ASGM

- Understand landscape health
- Get a baseline to build an action plan in a collaborative way
- Set a methodology for monitoring change over time






- Build strong partnerships
- Be part of the landscape decisions
- Improve landscape livelihood and ecosystem



Assessment Framework



Ecosystems

Conserve and restore natural ecosystems	
Effective conservation and protection of natural ecosystems	<input checked="" type="checkbox"/>
Natural ecosystem conversion	<input checked="" type="checkbox"/>
Natural ecosystem degradation	<input checked="" type="checkbox"/>
Ecosystem restoration	<input checked="" type="checkbox"/>
Natural ecosystem connectivity	<input checked="" type="checkbox"/>
Protect and restore biodiversity	
Threats to species	<input checked="" type="checkbox"/>
Biodiversity habitat conversion	<input checked="" type="checkbox"/>
Biodiversity habitat degradation	<input type="checkbox"/>
Biodiversity habitat restoration	<input type="checkbox"/>
Biodiversity habitat protection	<input checked="" type="checkbox"/>
Protect and restore natural ecosystems	
Water quantity	<input checked="" type="checkbox"/>
Water quality	<input checked="" type="checkbox"/>
Agriculture, forestry, and other land-use (AFOLU) sector GHG sources and sinks	<input checked="" type="checkbox"/>
Other ecosystem services	<input type="checkbox"/>



Human Well-Being

Improve standard of living, especially for vulnerable and/or marginalized groups	
Household income and assets	<input checked="" type="checkbox"/>
Health and nutrition	<input checked="" type="checkbox"/>
Education	<input checked="" type="checkbox"/>
Water, sanitation, and hygiene	<input checked="" type="checkbox"/>
Basic infrastructure	<input checked="" type="checkbox"/>
Vulnerability	<input type="checkbox"/>
Respect, protect, and fulfill human rights	
Child labor	<input checked="" type="checkbox"/>
Women's rights	<input checked="" type="checkbox"/>
Indigenous peoples 'and other marginalized groups' rights	<input checked="" type="checkbox"/>
Forced labor	<input checked="" type="checkbox"/>
Workers' rights	<input checked="" type="checkbox"/>
Other human rights	<input checked="" type="checkbox"/>

Governance

Recognize and protect rights to land and resources, and reduce related conflicts	
Land tenure	<input checked="" type="checkbox"/>
Land conflicts	<input checked="" type="checkbox"/>
Resources tenure	<input type="checkbox"/>
Promote transparency, participation, inclusion and coordination in landscape policy, planning, and management	
Land-use plan adoption and enforcement	<input checked="" type="checkbox"/>
Coordination of government agencies in land-use policy, planning, and management	<input checked="" type="checkbox"/>
Stakeholder Participation and inclusion in land-use policy, planning, and management	<input checked="" type="checkbox"/>
Illegality and corruption related to land and resources	<input checked="" type="checkbox"/>
Climate change vulnerability and adaptation	<input checked="" type="checkbox"/>

Production

Promote regenerative agricultural, agroforestry, and tree production systems	
Agricultural, agroforestry, and tree plantation productivity	<input checked="" type="checkbox"/>
Input use efficiency in agricultural, agroforestry, and tree production systems	<input checked="" type="checkbox"/>
Adoption of sustainable land management practices	<input type="checkbox"/>
Adoption of sustainable waste management practices	<input type="checkbox"/>
Promote sustainability of other natural resource-based production sectors	
User-defined indicator(s)	<input type="checkbox"/>

Identifying relevant indicators

- ▶ The LandScale assessment framework offers a holistic, globally applicable set of indicators and metrics
- ▶ At LandScale, we understand that landscapes are nuanced, and may require specific, user-defined indicators
- ▶ These indicators should reflect industry-relevant, international frameworks where possible



Water quality & usage, land degradation, biodiversity loss, air pollution



Formalization progress, community participation, conflict mitigation



Worker health & safety, child labor, forced labor presence, gender equity



Income stability, market access



Let's get to work!



Break-out rooms

What are the key indicators/metrics for your landscape?

- ▶ Breakout groups of 2-3
 - ▶ In your groups, discuss which indicators are necessary for your landscape (use LandScale's framework as a guide – you may wish to include LandScale indicators, adjusted indicators, or develop your own)
 - ▶ Start to think about the kinds of metrics needed to measure indicators
 - ▶ What data would be needed?
 - ▶ Are there any barriers to accessing this data?
 - ▶ Assigning a rapporteur to give a 5-minute plenary report
-

Assessment Framework



Ecosystems

Conserve and restore natural ecosystems	
Effective conservation and protection of natural ecosystems	<input checked="" type="checkbox"/>
Natural ecosystem conversion	<input checked="" type="checkbox"/>
Natural ecosystem degradation	<input checked="" type="checkbox"/>
Ecosystem restoration	<input checked="" type="checkbox"/>
Natural ecosystem connectivity	<input checked="" type="checkbox"/>
Protect and restore biodiversity	
Threats to species	<input checked="" type="checkbox"/>
Biodiversity habitat conversion	<input checked="" type="checkbox"/>
Biodiversity habitat degradation	<input type="checkbox"/>
Biodiversity habitat restoration	<input type="checkbox"/>
Biodiversity habitat protection	<input checked="" type="checkbox"/>
Protect and restore natural ecosystems	
Water quantity	<input checked="" type="checkbox"/>
Water quality	<input checked="" type="checkbox"/>
Agriculture, forestry, and other land-use (AFOLU) sector GHG sources and sinks	<input checked="" type="checkbox"/>
Other ecosystem services	<input type="checkbox"/>



Human Well-Being

Improve standard of living, especially for vulnerable and/or marginalized groups	
Household income and assets	<input checked="" type="checkbox"/>
Health and nutrition	<input checked="" type="checkbox"/>
Education	<input checked="" type="checkbox"/>
Water, sanitation, and hygiene	<input checked="" type="checkbox"/>
Basic infrastructure	<input checked="" type="checkbox"/>
Vulnerability	<input type="checkbox"/>
Respect, protect, and fulfill human rights	
Child labor	<input checked="" type="checkbox"/>
Women's rights	<input checked="" type="checkbox"/>
Indigenous peoples 'and other marginalized groups' rights	<input checked="" type="checkbox"/>
Forced labor	<input checked="" type="checkbox"/>
Workers' rights	<input checked="" type="checkbox"/>
Other human rights	<input checked="" type="checkbox"/>

Governance

Recognize and protect rights to land and resources, and reduce related conflicts	
Land tenure	<input checked="" type="checkbox"/>
Land conflicts	<input checked="" type="checkbox"/>
Resources tenure	<input type="checkbox"/>
Promote transparency, participation, inclusion and coordination in landscape policy, planning, and management	
Land-use plan adoption and enforcement	<input checked="" type="checkbox"/>
Coordination of government agencies in land-use policy, planning, and management	<input checked="" type="checkbox"/>
Stakeholder Participation and inclusion in land-use policy, planning, and management	<input checked="" type="checkbox"/>
Illegality and corruption related to land and resources	<input checked="" type="checkbox"/>
Climate change vulnerability and adaptation	<input checked="" type="checkbox"/>

Production

Promote regenerative agricultural, agroforestry, and tree production systems	
Agricultural, agroforestry, and tree plantation productivity	<input checked="" type="checkbox"/>
Input use efficiency in agricultural, agroforestry, and tree production systems	<input checked="" type="checkbox"/>
Adoption of sustainable land management practices	<input type="checkbox"/>
Adoption of sustainable waste management practices	<input type="checkbox"/>
Promote sustainability of other natural resource-based production sectors	
User-defined indicator(s)	<input type="checkbox"/>



Plenary feedback

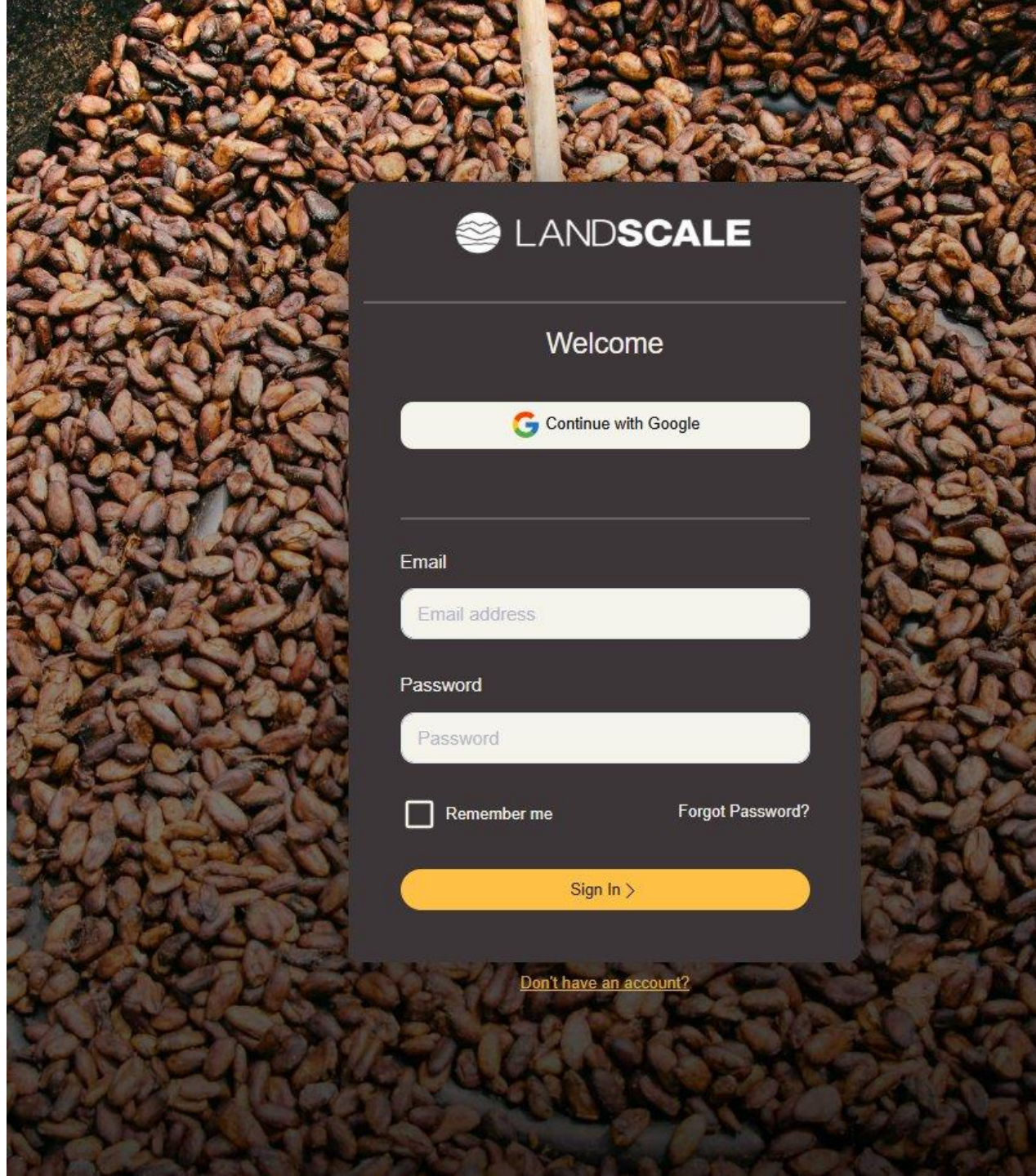


Closing and next steps

Next steps

- Register on the LandScale platform (platform.landscape.org)
- Follow instructions to set up landscape profile
- Start populating landscape information
- See you in the next session!

For support, contact hgrice@ra.org



Thank you.



Supported by:



Led by:



In partnership with:

