



Making a world of difference  
in small-scale gold mining.

A GEF Initiative



July 15 and 16, 2025

# Landscape and Jurisdictional Approaches Overview and Dive (1/2)

planetGOLD webinar series  
on the Landscape Approach

Supported by:



Led by:



In partnership with:





**Welcome!**

# Welcome



- Meet the EcoAgriculture Partners team



Réka Blakemore



Max Yamauchi



Juan Ramos

# Rules and roles for a welcoming learning space

- Find a **quiet space** with **good Internet**
- Keep **video** on
- Keep yourself on **mute** unless speaking
- **“Raise hand”** when you’d like to speak
- Use the **chat** function and reactions liberally
- Expect to **interact**. Ask questions!
- Speak **slowly**, not everyone has the same first language
- **Enjoy!**
- What else...?

## Objective

To review and ground participants in the core concepts of ILM and facilitate structured reflection on their contexts, practical opportunities and entry points for adopting and implementing landscape approaches in their local agendas.

## Agenda

- Countries and regions context review
- Landscape Approach Review
  - *4 Core Criteria for Landscape Initiatives*
- Landscape Profile Exercise
- Landscape performance scorecard Exercise





# A little bit of context

What we've learned from your previous experiences and specific landscape contexts...

---

## Overview: Common Challenges Across Projects in Africa

- Early-stage engagement: Most projects are still in early stages, with mixed readiness.
- Complex land governance: Limited local government capacity and overlapping roles between traditional, local, and national actors complicate decision-making.
- No monitoring systems: Most projects lack action plans, baseline data, and tools.
- Limited cross-country learning: Teams report weak coordination with other projects.
- Finance gap: Many miners lack access to credit and formal cooperatives.
- Infrastructure barriers: Remote sites and poor connectivity hinder implementation.



## CONTEXT OVERVIEW- Ghana

- **Status:** Project launched ~1.5 years ago.
- **Current Focus:** Formalizing ASGM groups/agreements, promoting responsible supply chains, and supporting mercury-free technologies.
- **Challenges:**
  - Highly centralized governance limits local decision-making.
    - Decisions made by the central government in a sector-specific way (insufficiently inclusive and transparent)
  - Post-election uncertainty could delay onboarding of new government stakeholders.
  - Informal community-miner agreements and negotiations
- They already have extensive stakeholder engagement, but are working on a communications campaign and awareness-raising in the communities.

planetGOLD project sites in Ghana



## CONTEXT OVERVIEW- Côte d'Ivoire

- **Status:** Project activities have begun, but team readiness is mixed
- **Current Focus:** Stakeholder engagement is underway; they have not yet begun mapping stakeholders or monitoring the landscape
- **Challenges:**
  - Weak coordination among actors, especially across sectors
  - No existing monitoring or action planning in place.
- All current landscape coordination is through the government, with limited engagement of the mining companies. Indigenous people are highly impacted and involved in the project.

planetGOLD project sites in Côte d'Ivoire



## REGION OVERVIEW- Americas

- Convening/Mapping Stakeholders: There have been challenges mapping and convening stakeholders across several projects
- Weak Governance Systems: The lack of formal governance platforms, weak coordination between sectors, and political influence in decision-making all present issues
- Lack of coordination and communication between projects: All teams want greater communication between PlanetGOLD teams.
- Lack of finance infrastructure: Each country identifies the lack of financing mechanisms for artisanal miners as a barrier.



## CONTEXT OVERVIEW- Ecuador

- **Status:** In the planning phase. Project launched in July 2024 and is preparing to pilot JA/LA in three provinces.
- **Current Focus:** Designing landscape strategies, hiring consultants with landscape expertise, collecting baseline data, and identifying key stakeholders.
- **Main Challenges:**
  - No prior experience applying landscape approaches in the mining sector.
  - Mining permit processes are slow, complex, and vulnerable to corruption.
  - Strong opposition to mining from environmental groups creates tension and makes inclusive dialogue difficult.
  - Local governance is fragmented

planetGOLD project sites in Ecuador



A close-up, high-angle photograph of a person's hands shaping a clay bowl on a pottery wheel. The hands are positioned to guide the wheel and the clay. The background is a blurred, textured surface, possibly a workbench or a wall. The lighting is warm and focused on the hands and the clay.

# Let's review...

Taking a look back at the Landscape and Jurisdictional Approaches and its core ideas...

**Landscape Approach...**

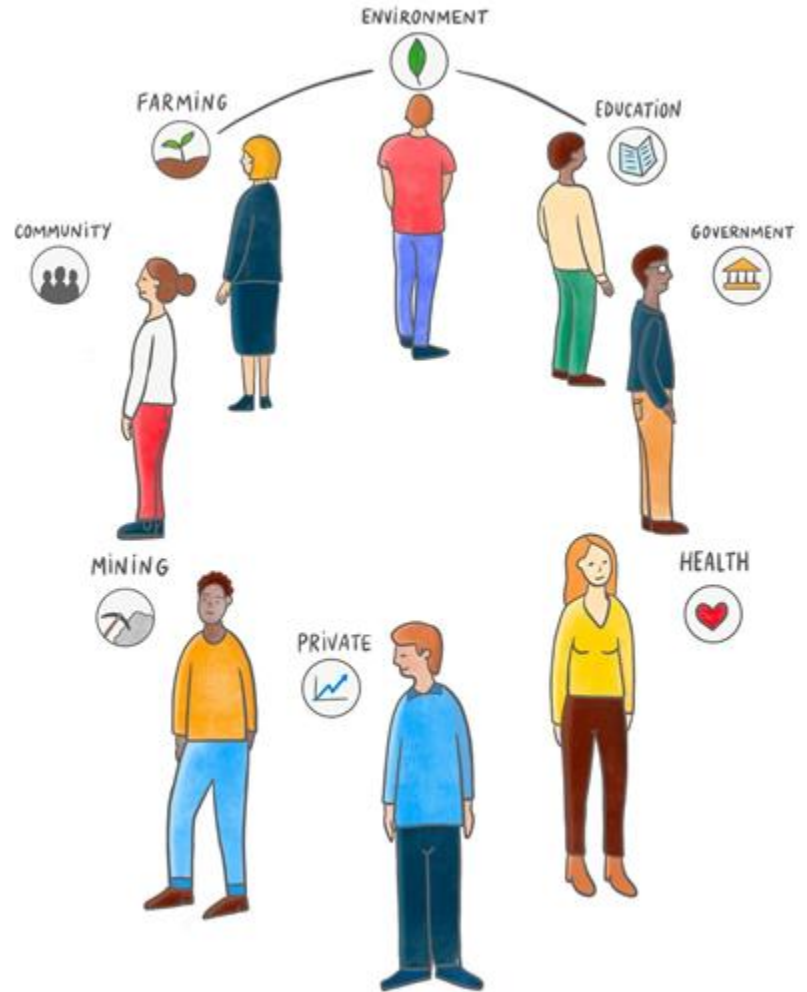
*What is that?  
And why are we talking  
about this, here?*



**Jurisdictional Approach...**

**Integrated Landscape  
Management...**

**Landscape approach is rooted in the idea that if we don't work together, we will not be able to solve society's and planets structural challenges...**



# INTERCONNECTED CHALLENGES

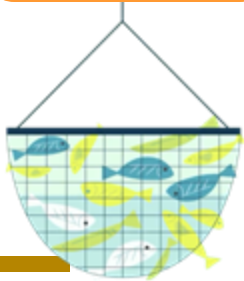
Poverty



Ecosystem degradation



Unsustainable economies



Climate crisis

- **Sectoral approaches** to conservation, climate change mitigation, and rural development
- **Insufficient to address interconnected challenges**
- **Global consensus:** the need for integrated approaches that reconcile multiple objectives

# INTERCONNECTED CHALLENGES

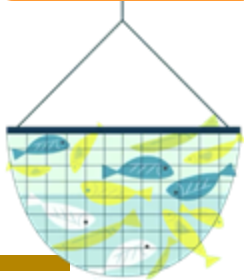
Poverty



Ecosystem degradation



Unsustainable economies



Climate crisis

# INTEGRATED SOLUTIONS

Secure livelihoods



Healthy nature



Thriving local economies



Solutions to climate change



**What are some of the structural challenges planetGOLD seeks to address in your country?**

---



**Group question...**

**We all agree that  
collaboration is the  
pathway forward...**

**However, nobody  
tells how to do that  
at a systemic level...**



## ***INTEGRATED LANDSCAPE MANAGEMENT***

***A way to ground and  
operationalize systemic work  
in practice ...***

---



# WHAT IS ILM?





**MANAGEMENT**

+



**INTEGRATED**

+



**LANDSCAPE**



## Landscape approach

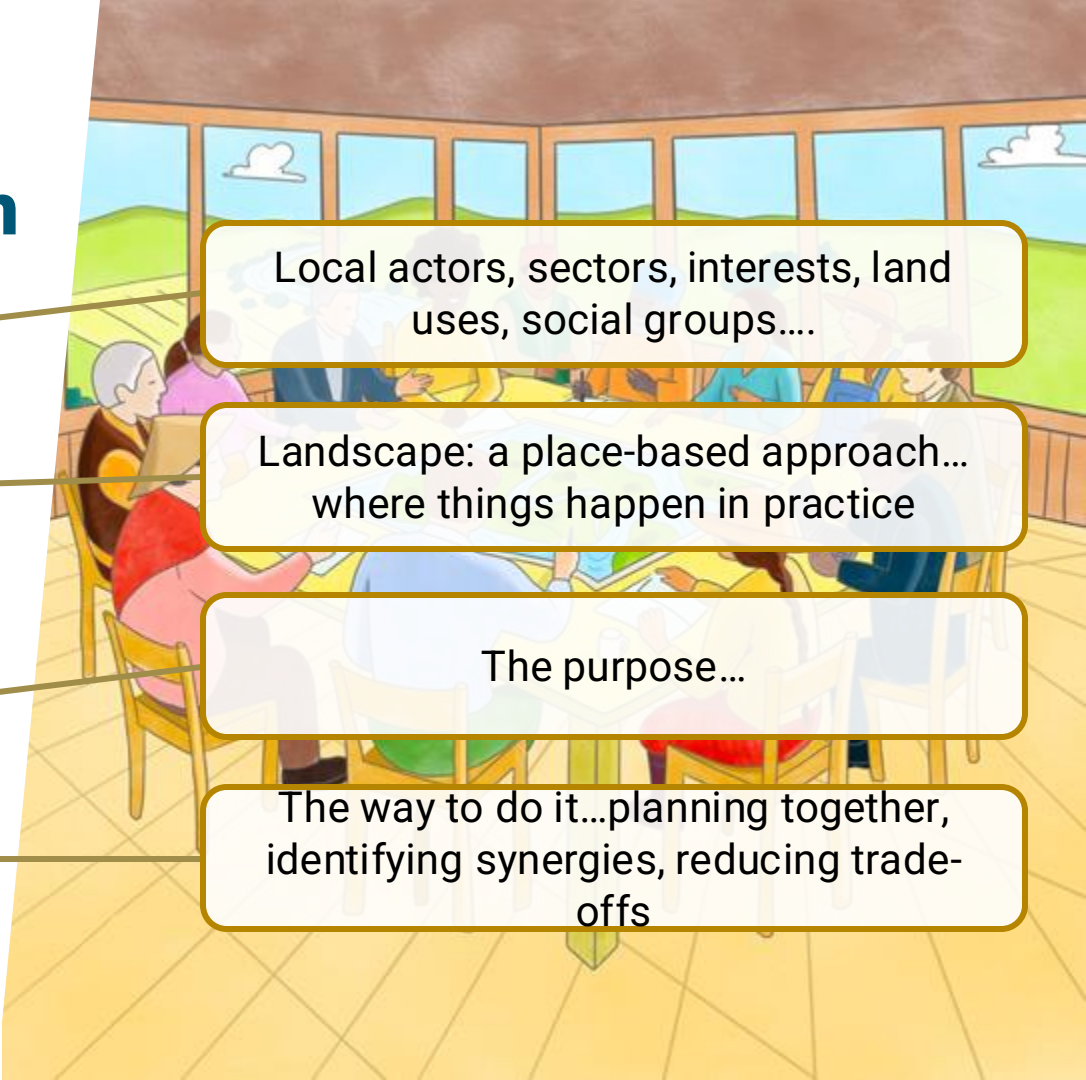
Landscape initiatives bring multiple stakeholders together in a defined geographic area to address prioritised sustainability challenges, such as deforestation, biodiversity loss, and livelihoods, through a collaborative approach.

---



# Landscape approach

- Landscape initiatives bring **multiple stakeholders** together
- in a **defined geographic area**
- to address prioritised **sustainability challenges**, such as deforestation, biodiversity loss, and livelihoods,
- **through a collaborative approach.**



Local actors, sectors, interests, land uses, social groups....

Landscape: a place-based approach... where things happen in practice

The purpose...

The way to do it...planning together, identifying synergies, reducing trade-offs

## Jurisdictional approach?

**A type of landscape approach where:**

- Landscape is delimited by political boundaries that are usually at the local government level.
- Exhibit strong subnational government leadership



# DIFFERENT APPROACHES TO THE MANAGEMENT OF LAND AND DEVELOPMENT

## SECTORAL APPROACH

- Focused on a **sector** of the (national) economy
- Collaboration between stakeholders for issues internal to the sector
- “Directed” by the public sector
- *Usually does not incorporate the broader issues and enabling conditions of the sector environment*

## VALUE CHAIN APPROACH

- Focused on the addition of value in the **components of the supply chain**
- Confined to a commodity
- “Directed” by the private sector
- *Little attention and discussion of the social and environmental impacts in the broader area*

## ILM APPROACH

- Uses a **geographical area** as a starting point
- Looks for entry points in an integrated way, observing the spatial integration of sectors and value chains
- Focused on public-private governance mechanisms within this area

# Four core criteria for mature Landscape Initiatives

## 1. Scale

Operates at the **landscape scale** of a defined ecological, socioeconomic, or administrative area...

## 2. Multi-stakeholder governance process

Governed by a **multi-stakeholder process** or participatory platform: decision-making...

## 3. Collective goals and actions

Agreed on a set of long-term **impact goals** and a collective **action plan** for the landscape

## 4. Collective monitoring

Manages a **collective monitoring** and reporting framework that enables assessment progress

## Four core criteria for mature Landscape Initiatives

### 1. Scale

Operates at the **landscape scale** of a defined ecological, socioeconomic, or administrative area...

Do you have  
clearly defined  
the **landscape**  
where you work?



# Four core criteria for mature Landscape Initiatives

## 1. Scale

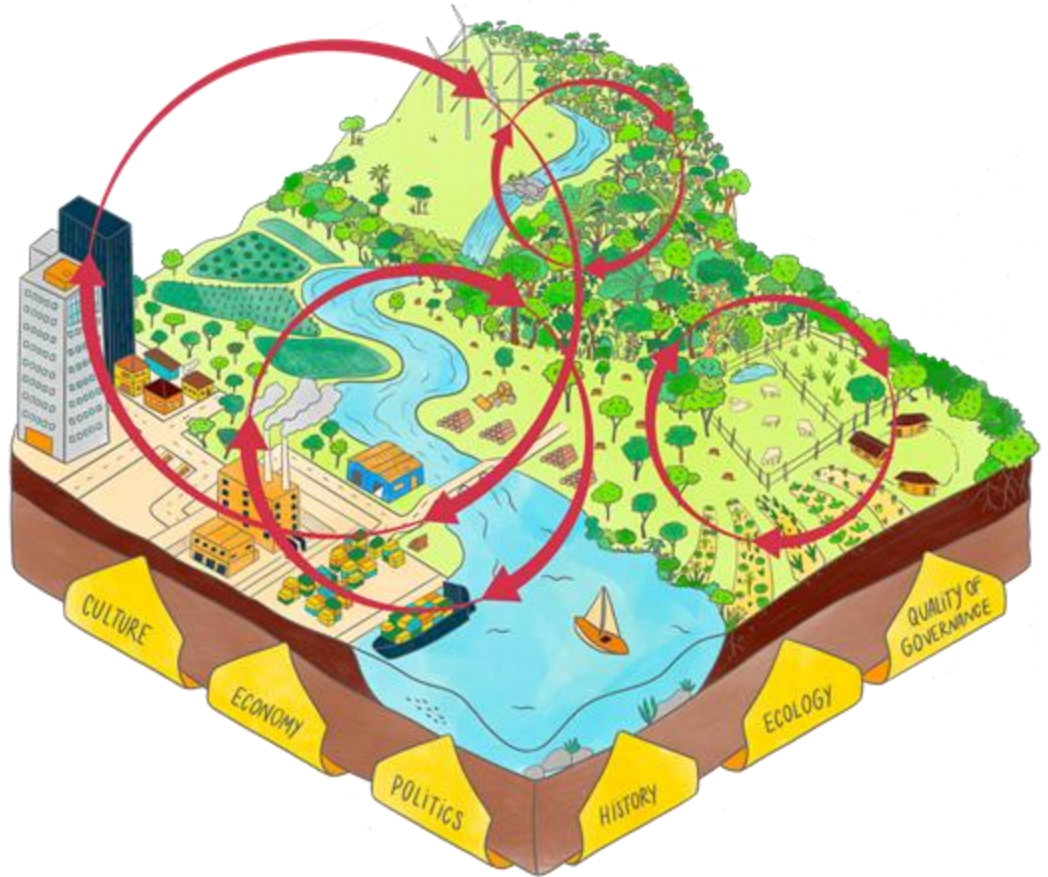
Operates at the **landscape scale** of a defined ecological, socioeconomic, or administrative area...

# What is a LANDSCAPE?



# LANDSCAPE?

*Landscapes are areas of land that are **so interconnected** physically, biologically, socially, or economically that **the best way to manage their processes and resources** requires coordination among different actors, sectors and interests within that space.*



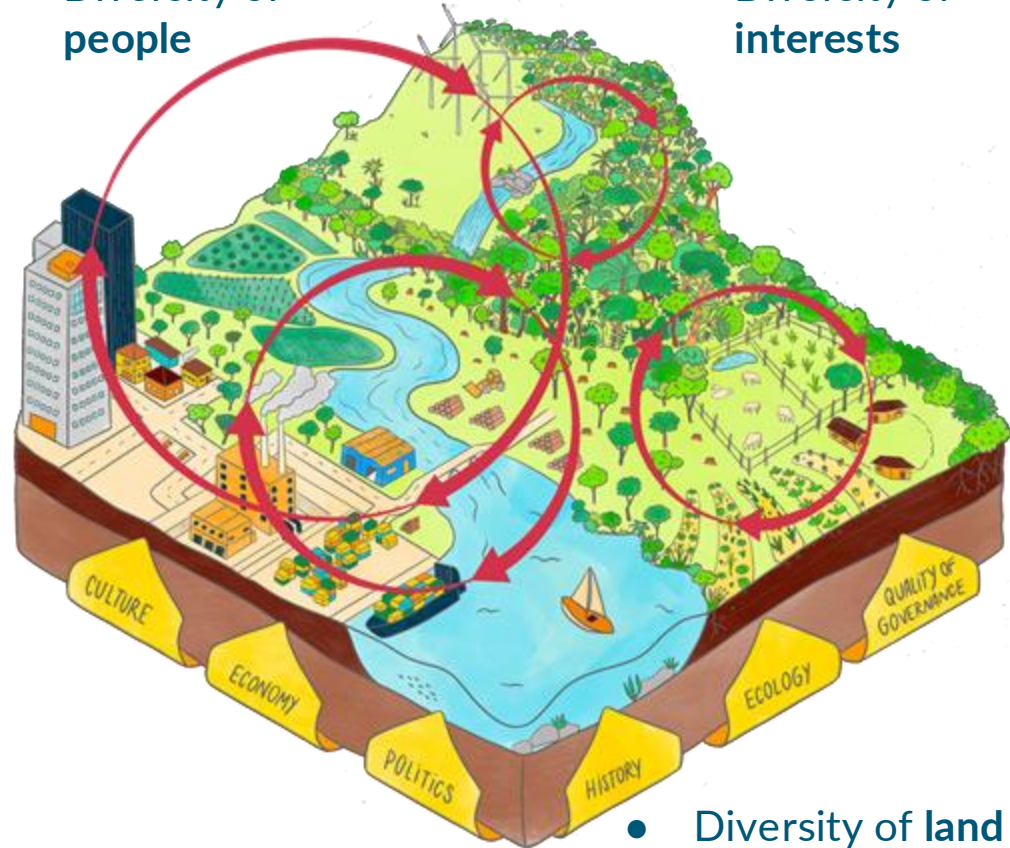
# LANDSCAPE

- Defined geographic area / place
- **Systems** – Natural and/or human-modified ecosystems
- **“Drivers”** - Influenced by ecological, historical, economic, and socio-cultural processes
- **Complex interactions** across space and time

## SOCIO-ECOLOGICAL SYSTEM

- Diversity of people

- Diversity of interests



- Diversity of land uses

## WHAT IS THE LANDSCAPE SCALE?

- **Large enough** to accommodate natural systems and deliver environmental, social, and economic benefits
- **Small enough** to be effectively managed by the people who use the land
- **On average**, between 10,000 ha – 1,000,000 ha (More or less? This range is flexible and context-specific!)

*The ideal scale is the one that allows the integrated management of social and environmental processes and systems by the people.*

## Delimiting the boundaries

Landscape boundaries are determined by local actors, based on their specific context. They can be defined by factors such as:

- **Natural** (watershed, topography, climate, ecosystems, species, etc.)
- **Administrative/jurisdictional**
- **Social/cultural/historical identification**
- **Economic** processes and activities
- **Challenges**



## 1. Scale

Operates at the **landscape scale** of a defined ecological, socioeconomic, or administrative area...

**Do you have  
clearly defined  
the landscape  
where you work?**

**How was it  
defined?**



**Landscape Profile Exercise**

# Break

5 minutes

---

# Landscape Profile Exercise



- Within your country teams (breakout rooms)
- Build a summarized **landscape profile** highlighting its main characteristics.
- Use the template provided...
- 20 minutes



## Landscape Profile: (Landscape Name)

**Map with the location of the landscape  
(and landscape boundaries if already defined)**

Location	
Size	
Boundaries definition	
Approximate Population	
Types of ecosystem	

Main livelihoods	
Main non-economic livelihoods	
Main agricultural and non-agricultural products	
Main challenges and problems in the landscape	
Governance and multi-stakeholder coordination spaces	

**Photos that characterize the landscape, its  
people, their livelihoods, and challenges**



# Landscape Profile Exercise

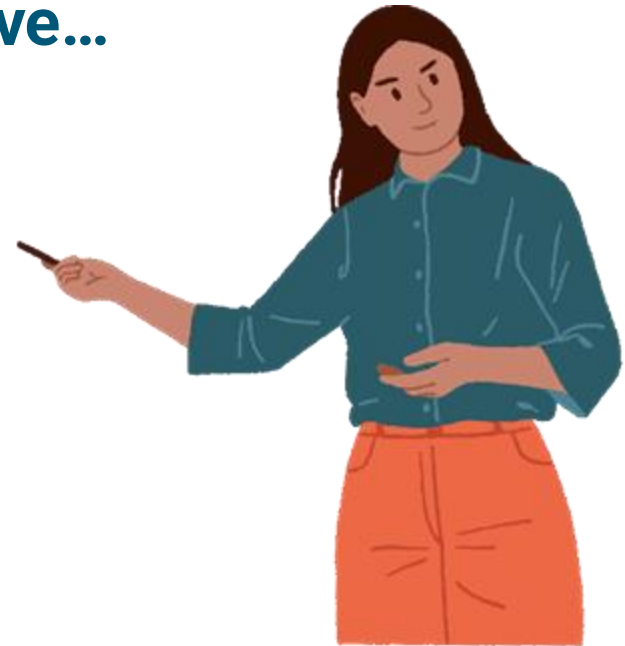


- Shareback...



# Landscape Profile...Why?

The first step to think about your landscape with an integrated perspective...



**Criteria 1**

**1. Scale**

**Operates at the landscape scale** of a defined ecological, socioeconomic, or administrative area...

**Now that we have  
our landscape and  
general perspective  
over its main  
characteristics...**

---

**Let's dive a  
little deeper  
into it...**



**Criteria 1**    **1. Scale**

**Operates at the landscape scale** of a defined ecological, socioeconomic, or administrative area...

# Landscape performance scorecard



**Activity**

# Landscape Performance Scorecard

EcoAgriculture Partners / Cornell University



## Landscape Performance Scorecard

### Directions:

Score each question below by circling a number. A 1 indicates very poor performance and a 5 indicates very high performance. Circle 2 numbers together to give an intermediate score. For example, circle the 1 and the 2 together to give a score of 1.5.

**Conservation Goal:** The landscape conserves, maintains, and restores wild biodiversity and ecosystem services.

### Conservation Questions

C1: Does the landscape contain an adequate quantity and suitable configuration of natural and semi-natural habitat to protect native biodiversity?	1	2	3	4	5
C2: Do natural and semi-natural habitats in the landscape approximate the composition and structure of the habitats historically found in the landscape?	1	2	3	4	5
C3: Are important species within the landscape biologically viable?	1	2	3	4	5
C4: Does the landscape provide locally, regionally, and globally important ecosystem services?	1	2	3	4	5
C5: Are natural areas and aquatic resources adequately buffered from productive areas and activities?	1	2	3	4	5

**Production Goal:** The landscape provides for sustainable, productive, and ecologically compatible agricultural production systems.

### Production Questions

P1: Do production systems respond to demand by internal (local) consumers and buyers, and by external buyers?	1	2	3	4	5
P2: Are production systems financially viable and can they adapt to changes in input and output markets?	1	2	3	4	5
P3: Are production systems resilient to disturbances, both natural and human?	1	2	3	4	5
P4: Do production practices have a neutral or positive impact on wild biodiversity and ecosystem services?	1	2	3	4	5
P5: Are species and varietal diversity of crops, livestock, fisheries and forests adequate and maintained?	1	2	3	4	5

# Landscapes Performance Scorecard



- Within your country teams (breakout rooms)
- Go through and complete the **scorecard** considering the same landscape used for the profile.
- Use the links provided...
- 12 minutes



# Landscapes Performance Scorecard

- Shareback...



*Final reflection for home...*

**How is ASGM connected to your landscape situation and the performance of the goals outlined in the scorecard?**



**See you soon!**



— **Thank you!**





Supported by:



Led by:



In partnership with:



CONSERVATION  
INTERNATIONAL





Making a world of difference  
in small-scale gold mining.

A GEF Initiative



July 17 and 18, 2025

# Landscape and Jurisdictional Approaches Overview and Dive (2/2)

planetGOLD webinar series  
on the Landscape Approach

Supported by:



Led by:



In partnership with:





**Welcome!**

# Welcome



- Welcoming remarks from EcoAgriculture Partners
- Meet the EcoAg team



Réka Blakemore



Max Yamauchi



Juan Ramos

# Rules and roles for a welcoming learning space

- Find a **quiet space** with **good Internet**
- Keep **video** on
- Keep yourself on **mute** unless speaking
- **“Raise hand”** when you’d like to speak
- Use the **chat** function and reactions liberally
- Expect to **interact**. Ask questions!
- Speak **slowly**, not everyone has the same first language
- **Enjoy!**
- What else...?

## Objective

To review and ground participants in the core concepts of ILM and facilitate structured reflection on their contexts, practical opportunities and entry points for adopting and implementing landscape approaches in their local agendas.

## Agenda

- Recap Session 1
- Cross Sectoral Collaboration - Core Criteria 2
- 5 Elements for implementing ILM
- ILM Situation Assessment



# Landscape Performance Scorecard

EcoAgriculture Partners / Cornell University



## Landscape Performance Scorecard

### Directions:

Score each question below by circling a number. A 1 indicates very poor performance and a 5 indicates very high performance. Circle 2 numbers together to give an intermediate score. For example, circle the 1 and the 2 together to give a score of 1.5.

**Conservation Goal:** The landscape conserves, maintains, and restores wild biodiversity and ecosystem services.

### Conservation Questions

C1: Does the landscape contain an adequate quantity and suitable configuration of natural and semi-natural habitat to protect native biodiversity?	1	2	3	4	5
C2: Do natural and semi-natural habitats in the landscape approximate the composition and structure of the habitats historically found in the landscape?	1	2	3	4	5
C3: Are important species within the landscape biologically viable?	1	2	3	4	5
C4: Does the landscape provide locally, regionally, and globally important ecosystem services?	1	2	3	4	5
C5: Are natural areas and aquatic resources adequately buffered from productive areas and activities?	1	2	3	4	5

**Production Goal:** The landscape provides for sustainable, productive, and ecologically compatible agricultural production systems.

### Production Questions

P1: Do production systems respond to demand by internal (local) consumers and buyers, and by external buyers?	1	2	3	4	5
P2: Are production systems financially viable and can they adapt to changes in input and output markets?	1	2	3	4	5
P3: Are production systems resilient to disturbances, both natural and human?	1	2	3	4	5
P4: Do production practices have a neutral or positive impact on wild biodiversity and ecosystem services?	1	2	3	4	5
P5: Are species and varietal diversity of crops, livestock, fisheries and forests adequate and maintained?	1	2	3	4	5

**How is ASGM connected to your landscape situation and the performance of the goals outlined in the scorecard?**

**Plenary discussion**



# Four core criteria for mature Landscape Initiatives

## 1. Scale

Operates at the **landscape scale** of a defined ecological, socioeconomic, or administrative area...

## 2. Multi-stakeholder governance process

Governed by a **multi-stakeholder process** or participatory platform: decision-making...

## 3. Collective goals and actions

Agreed on a set of long-term **impact goals** and a collective **action plan** for the landscape

## 4. Collective monitoring

Manages a **collective monitoring** and reporting framework that enables assessment progress

1. Scale

## Core Criteria 1

We have a **coherently defined landscape** and a better understanding of its main characteristics, interconnections and challenges...

**However...**

Operates at the **landscape scale** of a defined ecological, socioeconomic, or administrative area...



## Criteria 2

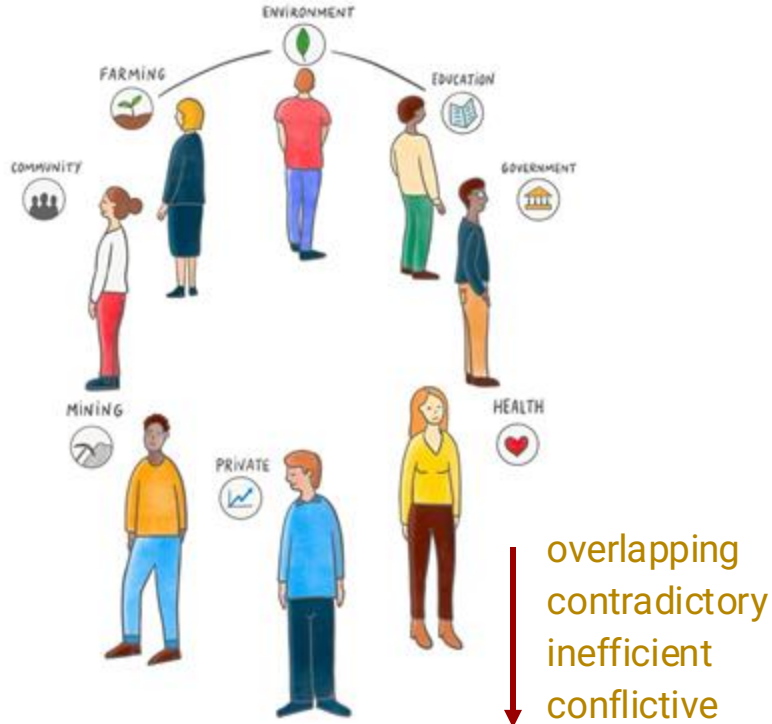
### 2. Multi-stakeholder governance process

The power of landscape initiatives lies in **aligning interests and priorities of key stakeholders**, around collective goals, actions, and investment so that they are better able to finance and address the system conditions needed to achieve long-term sustainability impacts at a landscape scale.

Governed by a multi-stakeholder process or participatory platform: decision-making...

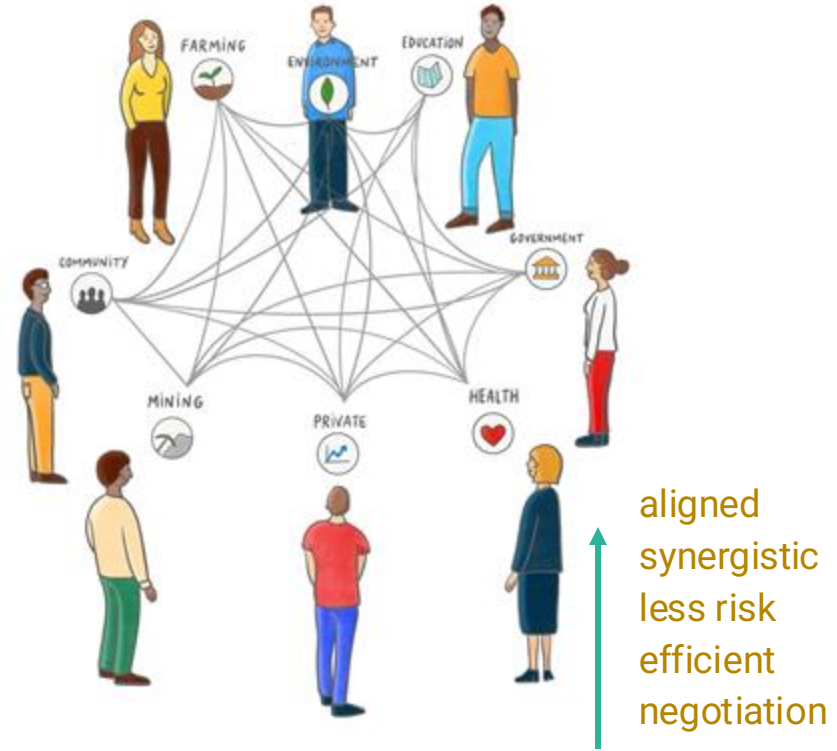


# SEGREGATED



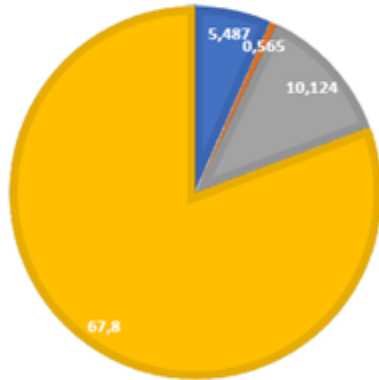
isolated, divided, separated

# INTEGRATED

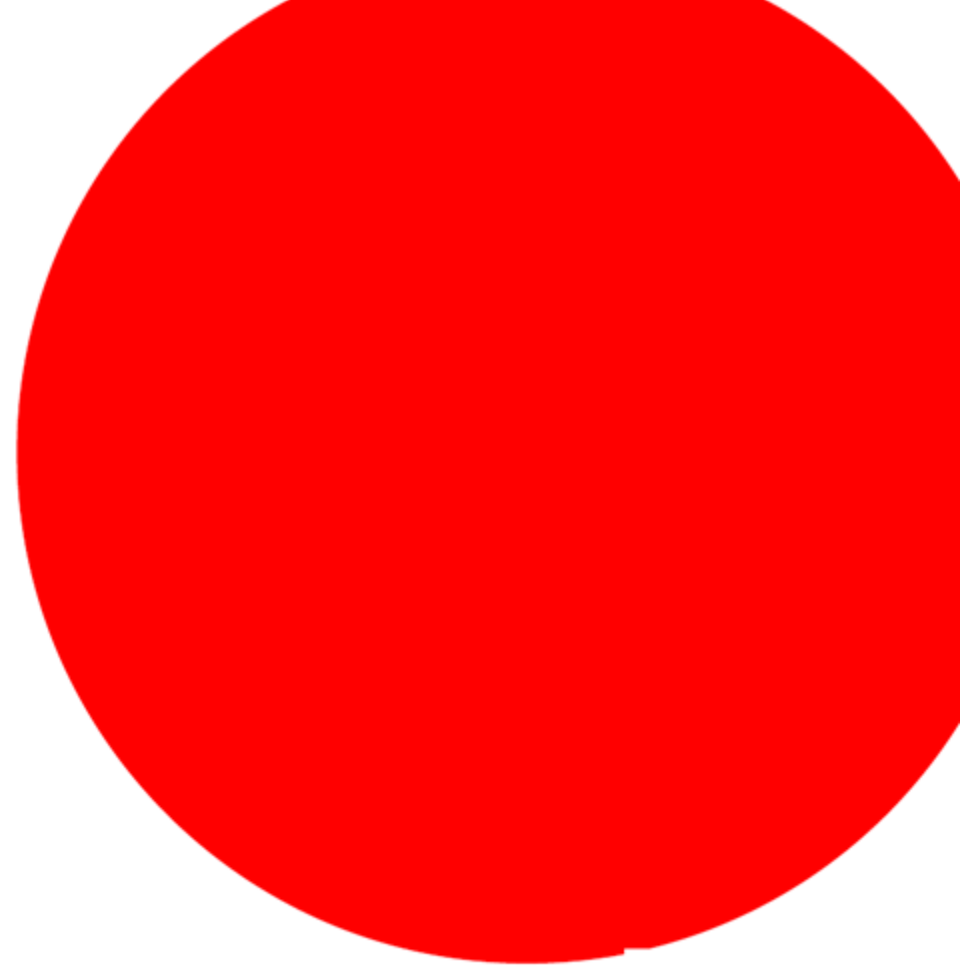


united, coordinated, connected

# Biodiversity-harming subsidies



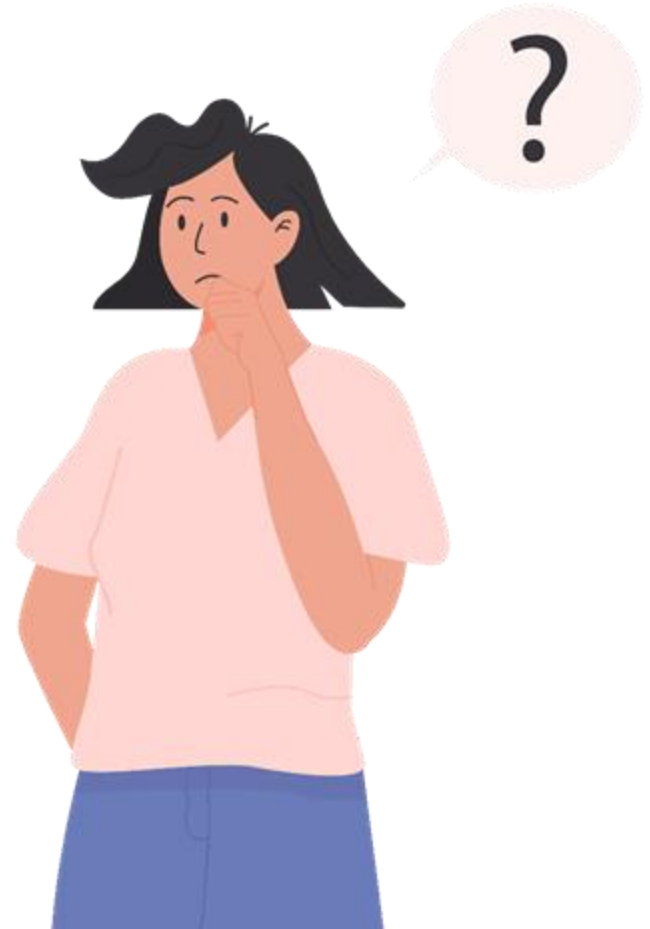
\$US 84 BN  
0.1% Global GDP  
(OECD 2020)





**What are ASGM related challenges within your landscape that hardly can be addressed with a traditional sectoral approach?**

(chat)



**What are ASGM related challenges within your landscape that can hardly be addressed with a sectoral or value-chain approach?**

---

While value-chain and sectoral approaches can help improve gold traceability, reduce mercury, or formalize some mining operations, they often fall short in tackling:

Examples...

1. Territorial disputes
2. Systemic environmental damage
3. Deep-rooted social inequalities
4. Governance complexity
5. Landscape-scale sustainability



## Landscape approach as an umbrella

- A landscape approach can (and often should) **serve as an umbrella framework** under which sectoral and value-chain approaches are integrated and aligned.



**Landscape  
partnership**

**Governance  
platforms**

**Multi-actor**

**Multi-stakeholder  
governance process  
by many names**

**Dialogue**

**Local  
Committee**

**Multi-Stakeholder  
Platform**

**Roundtables/  
Board**



## LANDSCAPE PARTNERSHIP

*A long-term intersectoral and multi-actor alliance between different groups of land managers, organizations, and resource users, **reconciling multiple objectives and working together** for the shared future of the landscape.*



**WHO IS SITTING  
AT THIS TABLE?**

**Collaboration**

**Joint decision  
making**

**Manage  
conflicts**

**Find synergies**

**Shared  
understanding**

**Shared  
Vision**

**Landscape  
Action plans**

**Neutral**

**Voluntary**

**Landscape scale**

**Long-term**

*Government, private sectors (agriculture, mining, industry, etc.), civil society, local communities and traditional groups, NGOs, nature ... all at the same table.*

## DESIGN ELEMENTS FOR LANDSCAPE PARTNERSHIPS

### Actors Involved

- Local communities
- Producer groups
- CBOs and NGOs
- Research institutions
- Government organisations
- Private sector: Businesses, banks, investors

### Roles & Responsibilities

- Leader
- Facilitator-coordinator
- Capacity-builder
- Technical input provider
- Financial investor
- Knowledge generator
- Evaluator
- Supporter
- Promoter-champion

### Function of the Partnership

- Managing partnership processes
- Promoting collaborative goals and actions
- Facilitating learning and communication

### Organisational Configuration

- Organisational structure (formality, links to government, etc.)
- Governance rules (membership, leadership, decision making)
- Investment architecture

## IS A NEW PARTNERSHIP NEEDED?

- Before creating a new multi-stakeholder partnership, it's important to assess existing platforms, networks, or initiatives in the landscape.
- Strengthening or aligning with existing efforts may be more effective than starting from scratch. Look for opportunities to support or connect projects with similar goals into a broader collaborative network.



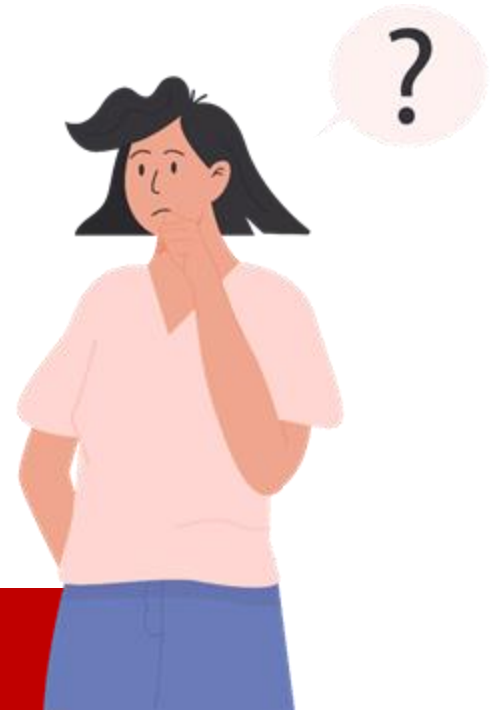
## Criteria 2

### 2. Multi-stakeholder governance process

Governed by a multi-stakeholder process or participatory platform: decision-making...

**In your landscape, is there a multi-stakeholder governance process/platform in place and working with a more systemic perspective?**

**Or maybe they have a focused agenda?**  
Water, mining, agriculture...?



**We will explore this question further in the next sessions...**

# Break

5 minutes

---

# Four core criteria for mature Landscape Initiatives

## 1. Scale

Operates at the **landscape scale** of a defined ecological, socioeconomic, or administrative area...

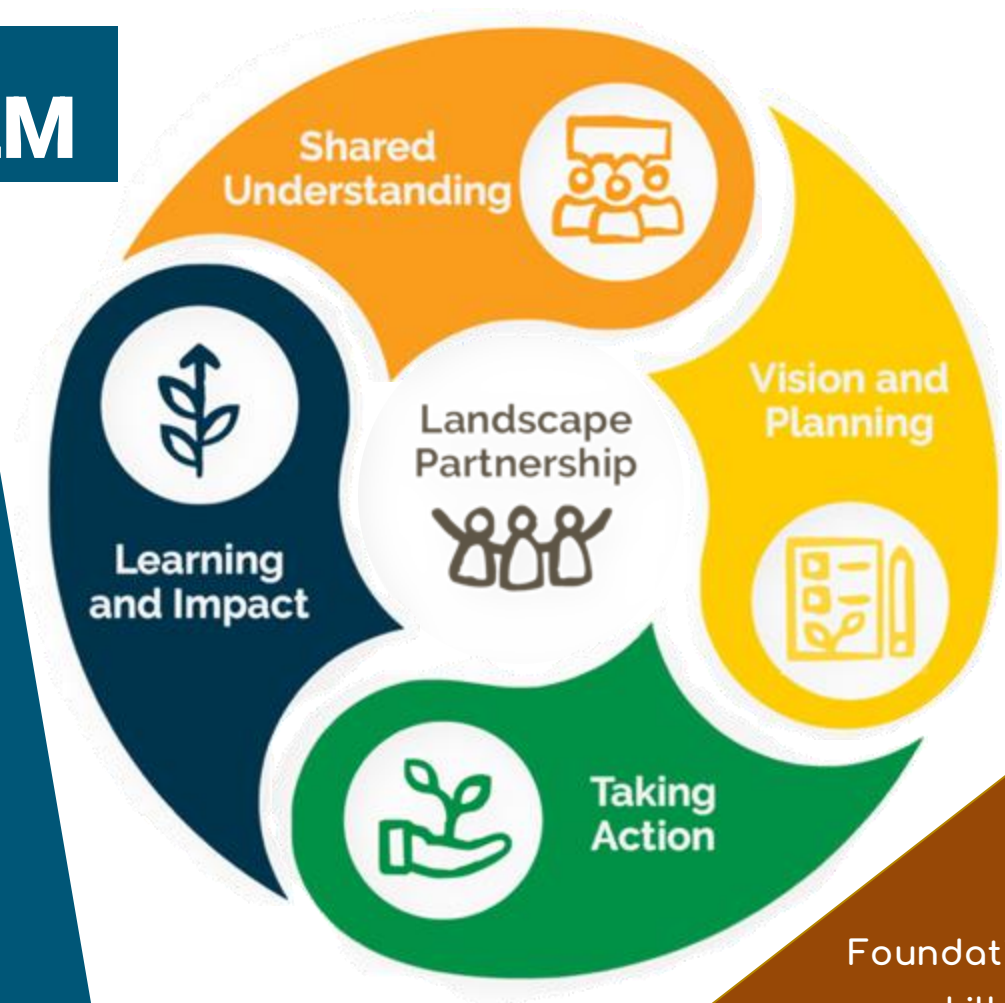
## 2. Multi-stakeholder governance process

Governed by a **multi-stakeholder process** or participatory platform: decision-making...



# 5 ELEMENTS of ILM

How to implement  
a Landscape and  
Jurisdictional  
Approach?



Foundational  
skills

# 5 ELEMENTS of ILM

## Foundational Skills

Having foundational capacities that enable the coherent, effective, and strategic implementation of ILM...

- Understanding of the approach
- Facilitation and conflict management
- Systems thinking
- Knowledge of local processes...
- Inclusive approach and equity



Foundational  
skills

# 5 ELEMENTS of ILM

## 1. Landscape Partnership

Developing a **resilient, long-lasting coalition of stakeholders** in the **landscape** from **across sectors & communities**



Foundational  
skills

# 5 ELEMENTS of ILM

## 2. Shared Understanding

Building a **common understanding** of the **state of the landscape, trends, future scenarios** & **one others' interests**



Foundational  
skills

# 5 ELEMENTS of ILM

## 3. Vision and Planning

Forging a **long-term, inspiring vision** & strategy & developing a **spatially targeted action plan** and landscape **finance approach**



Foundational  
skills

# 5 ELEMENTS of ILM

## 4. Taking Action

**Coordinating action**, developing & **financing** an integrated landscape **investment portfolio**, **tracking implementation**

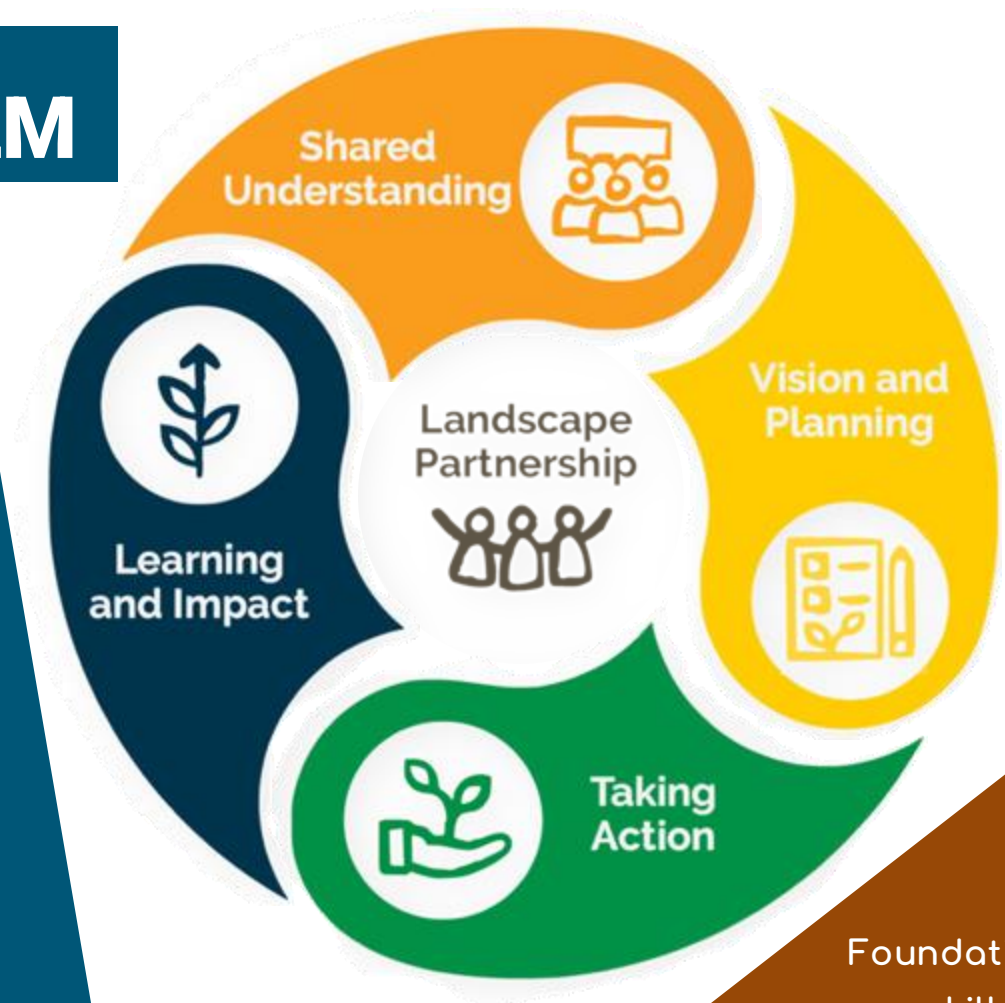


Foundational  
skills

# 5 ELEMENTS of ILM

## 5. Learning and Impact

Measuring landscape impacts, capturing lessons learned, & **adjusting** the landscape strategy & action plan



## The ILM time frame

- **Long-term** thinking...
- **Structural changes** take time.
- It goes **beyond traditional project cycles** and political plans.
- **Enables multigenerational** thinking and adaptation to climate change.
- Governance **costs**...



**What are the next steps you need to take to start working or advance with a Landscape or Jurisdictional Approach?**

---



## ILM Situation - Quick tick box assessment

*How are things currently moving?*

# ILM Temperature check

# Group Activity

Foundational Skills					
We have a full understanding of the Integrated Landscape Management approach.	0 1	0 2	0 3	0 4	0 5
We are satisfied with our facilitation capacity and competence.	0 1	0 2	0 3	0 4	0 5
We fully understand the ecological flows impacting our landscape. For example water, soil, biodiversity, carbon cycle, nutrient cycle.	0 1	0 2	0 3	0 4	0 5
We manage conflict and negotiation situations well.	0 1	0 2	0 3	0 4	0 5
We share leadership between a diverse set of partners engaged in our initiative.	0 1	0 2	0 3	0 4	0 5
We include a diverse set of stakeholders in the design and implementation of our approach. (E.g. age, gender, minorities,...)	0 1	0 2	0 3	0 4	0 5
We fully understand the complexity and systemic relationships between social and ecological elements in our landscape.	0 1	0 2	0 3	0 4	0 5
We have a full understanding of different finance opportunities for our landscape.	0 1	0 2	0 3	0 4	0 5
We fully and explicitly engage youth in our activities and approach.	0 1	0 2	0 3	0 4	0 5
Element 1: Landscape partnership					
Stakeholders are well mapped and analyzed.	0 1	0 2	0 3	0 4	0 5
All relevant stakeholders have been engaged successfully.	0 1	0 2	0 3	0 4	0 5
We fully (co-)developed a landscape partnership agreement.	0 1	0 2	0 3	0 4	0 5
We fully assessed the capacity and performance of key landscape stakeholders.	0 1	0 2	0 3	0 4	0 5
Element 2: Shared understanding					

# SET

## Situation and Exploration Tool

---

## 1000L's Situation and Exploration Tools (SET)

### Tools

The 1000L's Situation and Exploration Tools (SET) serve as a valuable instrument designed for landscape partners (LPs) to reflect on their background, experiences, interests, and comprehension of integrated landscape management (ILM). This tool aids in identifying their strengths and areas for growth, enabling them to prioritize the enhancement of skills and capabilities necessary for effective ILM implementation, regardless of the landscape partnership's maturity stage.



**Considering the previous exercise/reflection, what are the next steps to focus on to operationalize a Landscape Approach?**

**List 5 steps...**

**Group activity**



# Final reflections



## Value-chain x Sector x Landscape

**Different development approaches fit for different purposes and can be strategically combined...**



## Landscape and Jurisdictional approaches for **ASGM**?

The ASGM sector can benefit substantially from applying a landscape approach to sustainability...



## In Summary...

ASGM within a landscape approach is not just about cleaner mining—it's about placing mining in a broader social-ecological system. This enables:

- Integrated Management of Land and Resources
- Multi-Stakeholder Engagement and Conflict Resolution
- Balancing Livelihoods with Conservation
- Environmental Safeguards and Innovation
- Strengthening Policy and Institutional Coordination



## The landscape approach also has its challenges...

- Complex coordination among actors and sectors.
- Weak or fragmented governance and unclear institutional mandates.
- Short project cycles vs. long-term transformation.
- Limited and inflexible financing.
- Difficulty in measuring and communicating landscape-level impacts.
- Power asymmetries and inclusion gaps.
- Low political and institutional support for cross-cutting, long-term processes.



**How can your ASGM work  
benefit from a landscape  
systems approach with other  
sectors and actors?**

**Question for next sessions...**





**Thanks and see you soon!**





Supported by:



Led by:



In partnership with:



CONSERVATION  
INTERNATIONAL

