



Making a world of difference
in small-scale gold mining.

A GEF Initiative

7 May 2025

Introduction to the planetGOLD Criteria

Supported by:



Led by:



In partnership with:

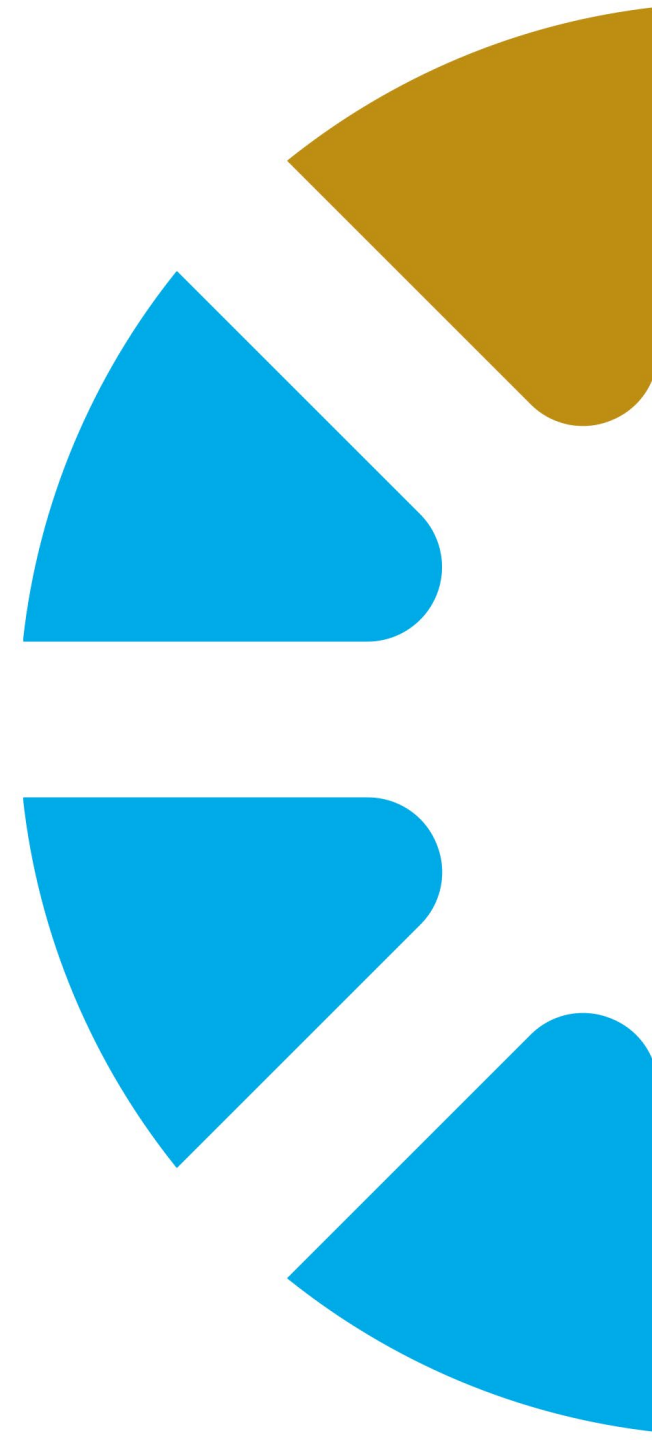


CONSERVATION
INTERNATIONAL



Housekeeping:

- ▶ This PowerPoint and recording will be circulated following the session.
- ▶ All relevant materials can be found planetGOLD.org “Home Base” webpage.
<https://www.planetgold.org/home-base>
- ▶ Questions can be written in the chat box, and the team will address as we are able.





Purpose of the planetGOLD Criteria

The planet**GOLD** Criteria are **NOT**

- ▶ A CERTIFICATION PROGRAM
 - ▶ A BRAND
 - ▶ A STANDARD
-

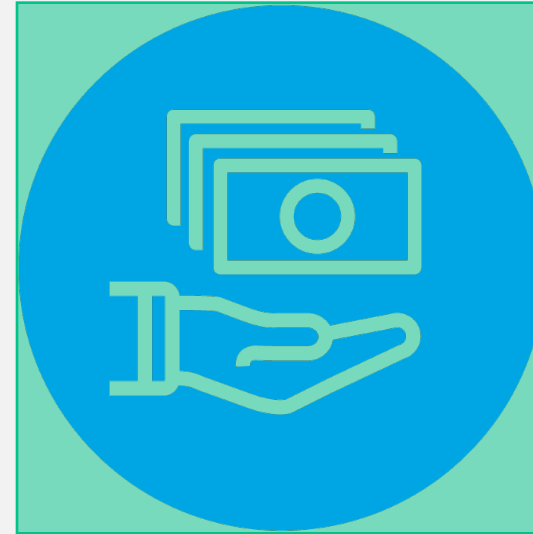
Govern the operations of ASGM entities engaged with the planetGOLD Programme

Require operations to make efforts to avoid, minimize, mitigate, and offset adverse impacts to people and environment

Help operations attract financing and access to formal markets

Benefits of Compliance with Due Diligence

- Improve the working conditions for miners
- Foster better relationships with communities
- Possible business benefits:
 - Competitive market prices
 - Better payment terms
 - Access to finance

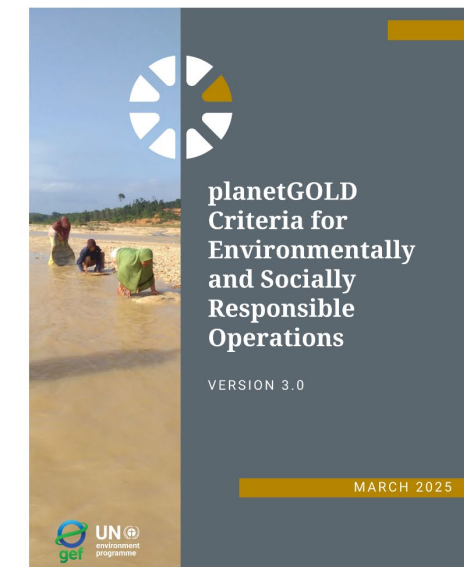
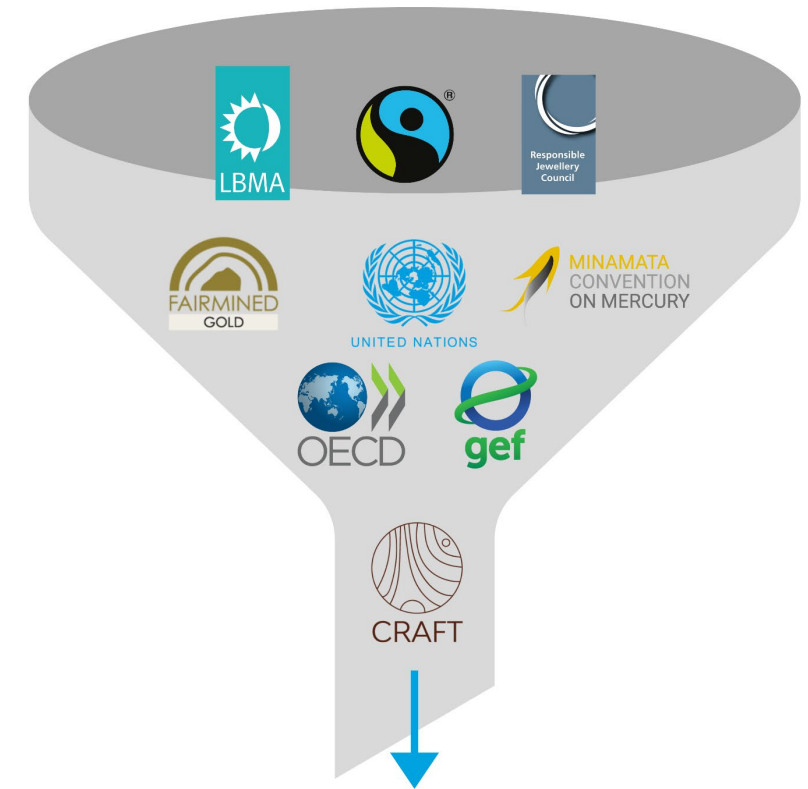




Development of the planetGOLD Criteria and Introduction to the CRAFT Code

Review of Relevant Standards:

- [Global Environment Facility \(GEF\): Policy on Environmental and Social Safeguards](#)
- [Minamata Convention on Mercury](#)
- [Organisation for Economic Co-operation and Development \(OECD\): Due Diligence Guidance for Responsible Supply Chains of Minerals from Conflict-affected and High-risk Areas](#)
- [Code of Risk-mitigation for ASM Engaging in Formal Trade \(CRAFT\)](#)
- [Fairmined/ Fairtrade](#)
- [London Bullion Market Association \(LBMA\)](#)
- [Responsible Jewellery Council \(RJC\)](#)



What is the CRAFT Code?

- ❖ A progressive performance standard for ASM mineral producers, **not a product standard**.
- ❖ Complies with the OECD Minerals Guidance and the EU legislation on conflict minerals
- ❖ A code for **progressive compliance**
- ❖ A tool for ASM and the downstream industry to validate its eligibility to sell and source minerals and metals that originate from ASM
- ❖ A gateway into the **formal market** for ASM, focused on the mitigation of the main ASM risks.



CRAFT

An open-source code released under the Creative Commons CC BY-SA 4.0 license. Just like any other open-source standard, CRAFT may be used by any stakeholder in the ASM supply chain, as well as by governments, development organizations, among others.

CRAFT Code Modules

Module 1 and Module 2

1. Adopt a management system
2. Legitimacy of the mining entity must be verified

Module 3: Must immediately suspend or discontinue engagement

- Direct or indirect support of worst forms or forced **child labor**;
- Involvement or links to in any forms of **torture** or cruel, inhuman, and degrading treatment;
- Involvement or links to gross **human rights violations and abuses**, such as widespread sexual violence, and war crimes.

Module 4: Suspend or discontinue engagement after failed attempts at mitigation

- Direct or indirect support to entities that **illegally control** any stage of mining operation;
- Engagement with **entities responsible for gross human rights abuses**;
- **Misrepresentation of payments** to government and security forces.





planetGOLD-specific Criteria

- ✓ **Declare** in a written statement its commitment to: **(1)** follow the planetGOLD Criteria and **(2)** promote the reduction and releases of, and exposure to, mercury in ASGM processing including mercury-free methods
 - ✓ **Nominate** miner focal point to implement the Criteria
 - ✓ **Demonstrate** conformance with CRAFT Modules 1-4
 - ✓ **Demonstrate** conformance with the planetGOLD three specific criteria
-

Three planetGOLD-specific Criteria

Eliminate mercury in the mining process



And appropriately manage mercury contaminated tailings.

Respect and protect the rights of Indigenous Communities



These are requirements of the GEF environment and social safeguards.

Minimize impact on biodiversity



With a special emphasis on protecting biodiversity and critical habitats.

planetGOLD Reporting Process





Link to planetGOLD Cross-Programme Indicators

Amount of responsible gold produced (kg)
from planetGOLD participating operations

- ▶ **AT A MINIMUM** operations must conform with the planetGOLD criteria for engagement with buyers:



No “Module 3” human rights risks are present, with mitigation plan for any Module 4 risks



Mercury-free

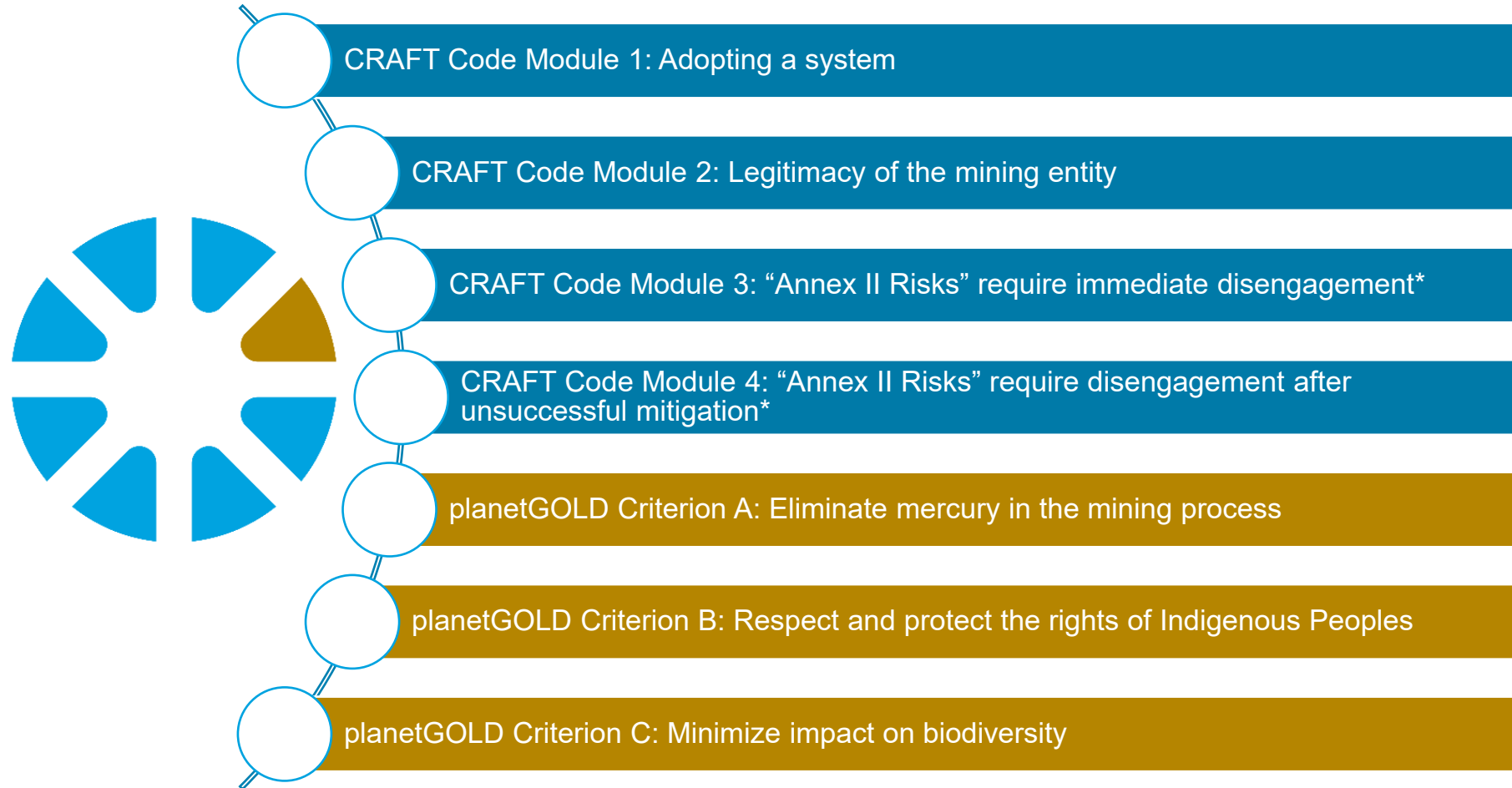
Amount of responsible gold sold via formal
supply chain mechanism

- ▶ **Applies where:**

- ✓ A formal supply chain mechanism has been developed/ supported by the project
- ✓ Gold sales from planetGOLD participating operations can be traced from mine to a formal market/buyer

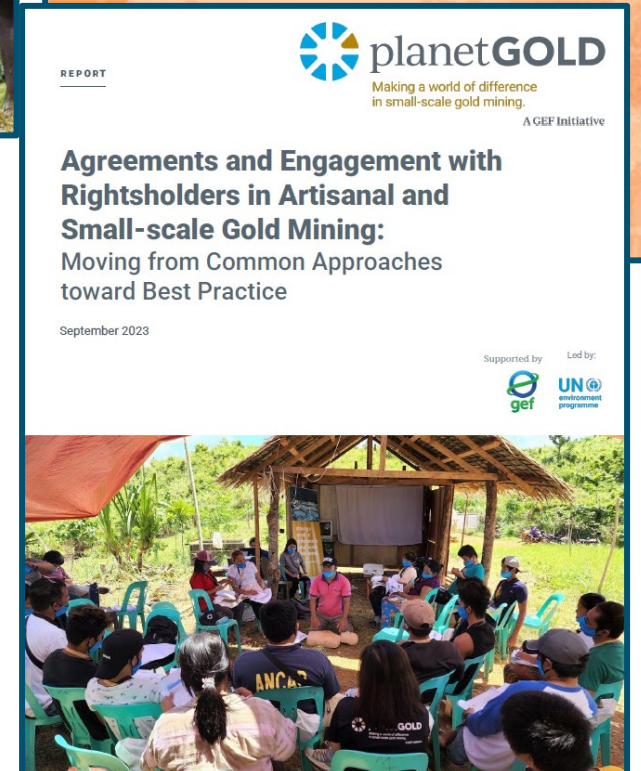
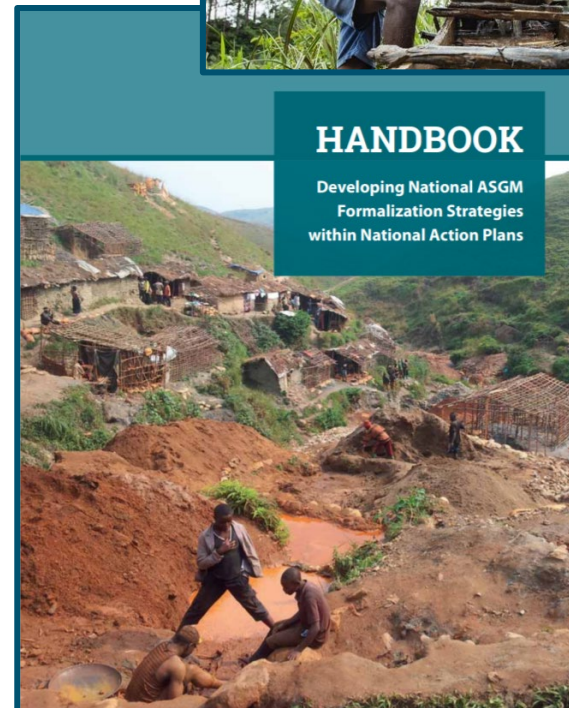
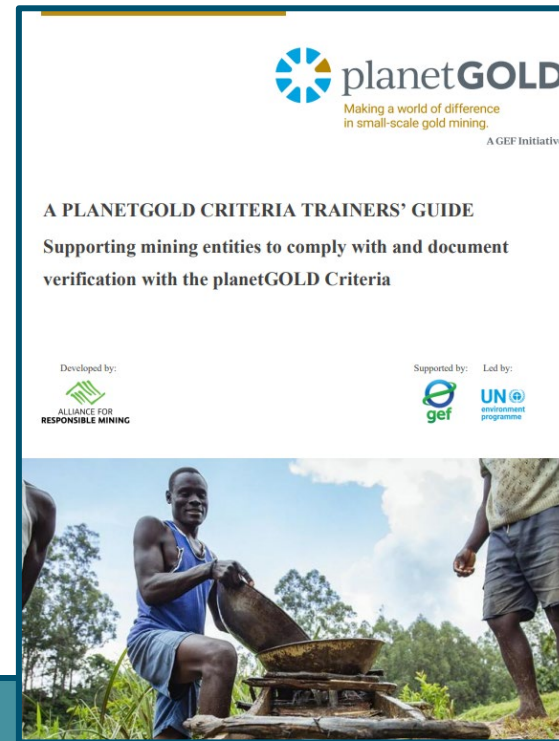


To Review: The planetGOLD Criteria include:



Additional Resources

- [The Responsible Way: Training on planetGOLD Criteria and Market Access](#)
- [Agreements and Engagement with Rightsholders in Artisanal and Small-scale Gold Mining: Moving from Common Approaches toward Best Practice](#)
- [Minamata Convention on Mercury: Text and Annexes](#)
- [Formalization Handbook](#)
- [Guidelines on Indigenous Peoples' Issues](#)



Thank you

Susan Keane
planetGOLD Global Coordinator
skeane@nrdc.org

Jennifer Wilmore Scroggins
planetGOLD Communications Manager
jwilmorescroggins@nrdc.org

Mona Avalos
planetGOLD Knowledge Mgt. Coordinator
mavalos@nrdc.org

Marilyn Kunce
planetGOLD Regional Coordinator
mmartinez@nrdc.org

Assietou Gaye
planetGOLD Regional Coordinator
agaye@nrdc.org

Ken Davis
Programme Officer, UNEP
Kenneth.davis@un.org

Malgorzata Stylo
Programme Officer, UNEP
Kenneth.davis@un.org