



Making a world of difference
in small-scale gold mining.

A GEF Initiative



August 12, 2025

Stakeholder Engagement and Landscape Governance: Session 1/2

planetGOLD webinar series on
the Landscape Approach

Supported by:



Led by:



In partnership with:



UNITED NATIONS
INDUSTRIAL DEVELOPMENT ORGANIZATION





Welcome!

- Meet the EcoAgriculture Partners team



Réka Blakemore



Max Yamauchi



Patricia Bon



Juan Ramos

- Please, introduce yourself in the chat!
-

Rules and roles for a welcoming learning space

- Find a **quiet space** with **good Internet**
- Keep **video** on
- Keep yourself on **mute** unless speaking
- **“Raise hand”** when you’d like to speak
- Use the **chat** function and reactions liberally
- Expect to **interact** . Ask questions!
- Speak **slowly** , not everyone has the same first language
- Breath, stretch and **enjoy!**
- What else...?

Objective

Support and provide momentum for planetGOLD participants to engage cross-sectoral partners towards landscape governance in places where ASGM is occurring

Agenda

- Review stakeholder identification and engagement in the context of jurisdictions with ASGM
- Consider connections between stakeholder engagement and landscape governance in the context of ASGM
- Develop draft work plans based on the context of a planetGOLD participant to lay out next steps



Recap



Landscape approach

Landscape initiatives bring multiple stakeholders together in a defined geographic area to address prioritised sustainability challenges, such as deforestation, biodiversity loss, and livelihoods, through a collaborative approach.



Four core criteria for mature Landscape Initiatives

1. Scale

Operates at the **landscape scale** of a defined ecological, socioeconomic, or administrative area...

2. Multi-stakeholder governance process

Governed by a **multi-stakeholder process** or participatory platform: decision-making...

3. Collective goals and actions

Agreed on a set of long-term **impact goals** and a collective **action plan** for the landscape

4. Collective monitoring

Manages a **collective monitoring** and reporting framework that enables assessment progress

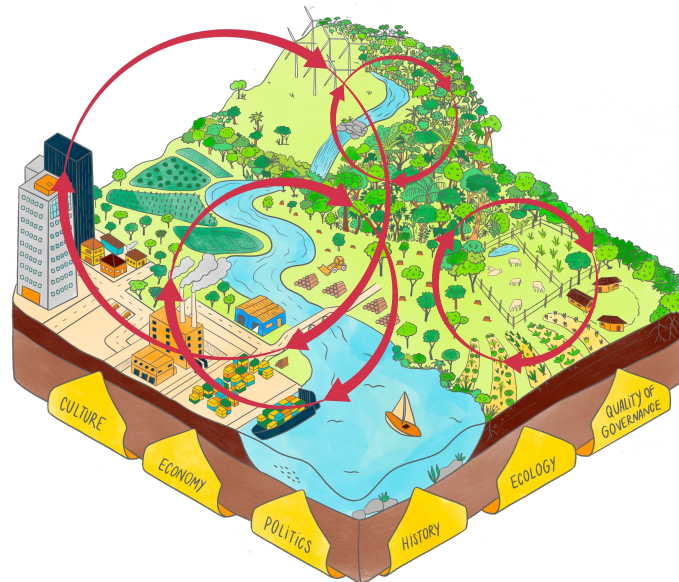
Four core criteria for mature Landscape Initiatives

1. Scale

Operates at the landscape scale of a defined ecological, socioeconomic, or administrative area...

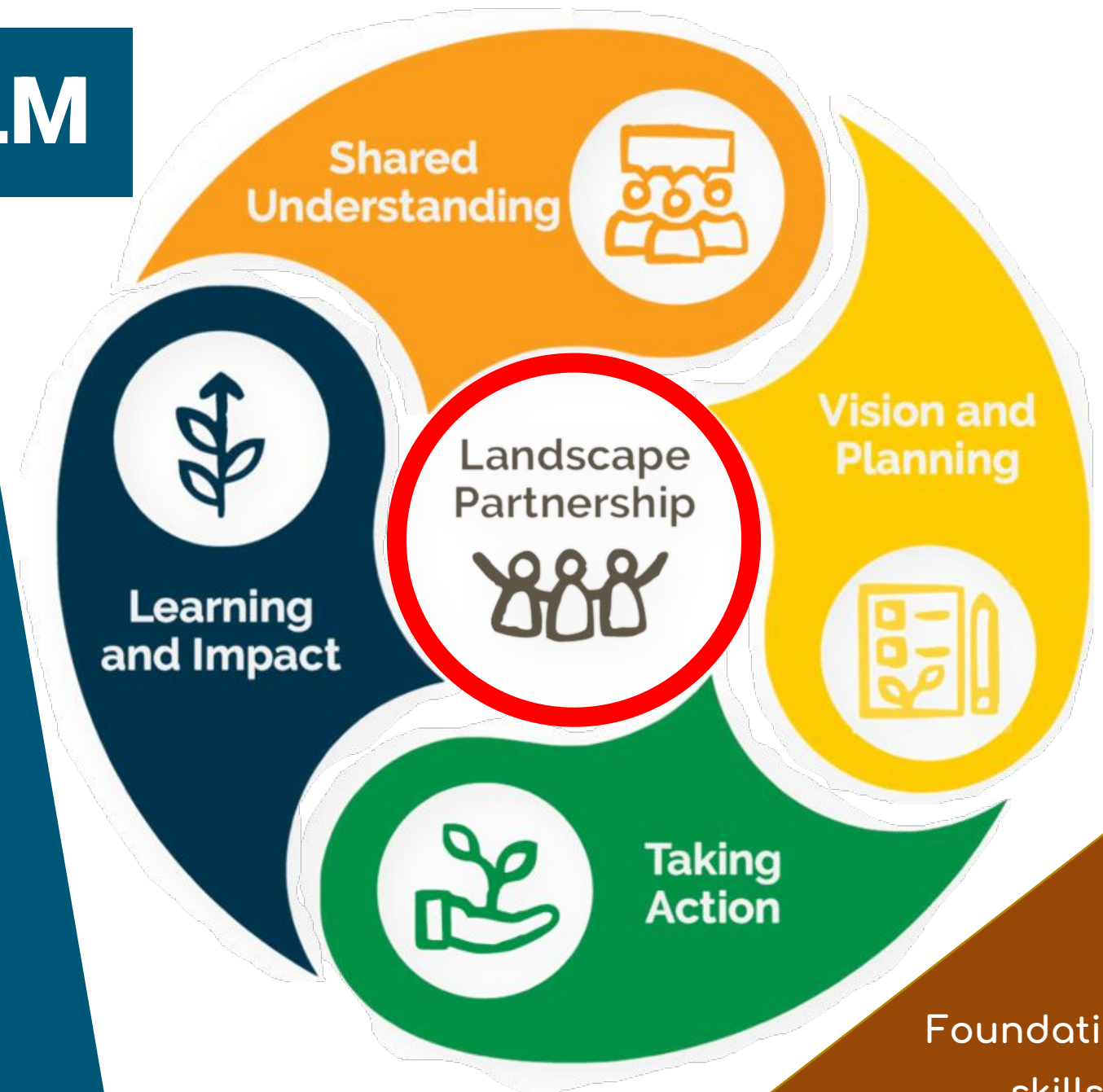
2. Multi-stakeholder governance process

Governed by a multi-stakeholder process or participatory platform: decision-making...



5 ELEMENTS of ILM

**How to implement
a Landscape and
Jurisdictional
Approach?**



Foundational
skills

Collaboration

Joint decision making

Manage conflicts

Find synergies

Shared understanding

Shared Vision

Landscape Action plans

WHO IS SITTING AT THIS TABLE?

Neutral

Voluntary

Landscape scale

Long-term

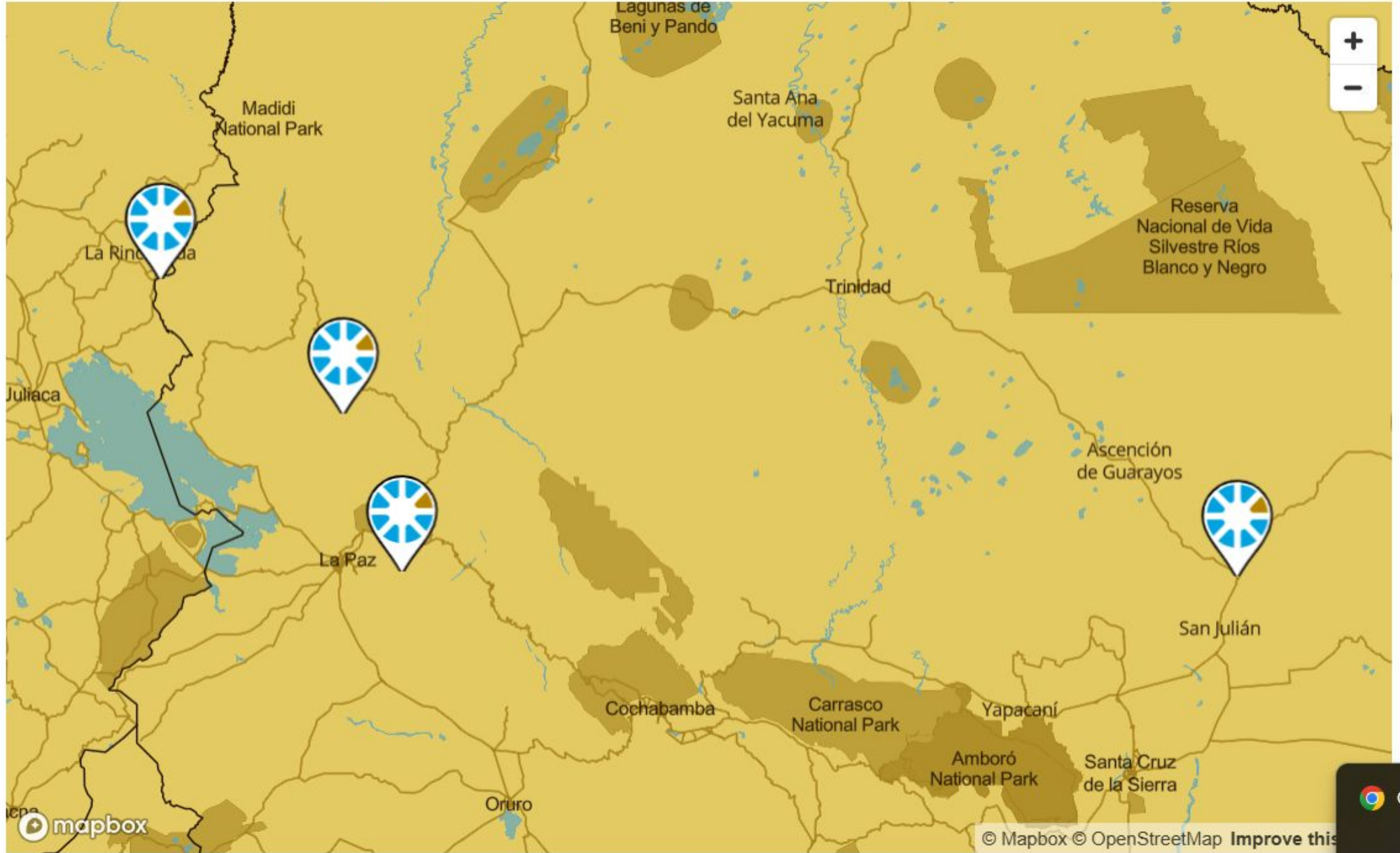




A little bit of context

What we've learned from your previous experiences and specific landscape contexts...

planetGOLD project sites in Bolivia



Involucramiento de actores en el proyecto de Bolivia

- El equipo está muy interesado en trabajar para fomentar la apropiación del trabajo por parte de los actores locales, fortalecer su gobernanza y definir mejor sus contribuciones.
- Mapear a las partes interesadas es un reto: el enfoque actual se centra en generar confianza con los actores, intercambiar información con actores clave y comprender las expectativas de los diferentes participantes.
- En la zona de las llanuras bajas de La Paz, este proyecto está vinculado a las mujeres mineras, ya que existe un gran grupo de mujeres que buscan oro en la cuenca y trabajan en la zona.
- Las actividades mineras afectan a los pueblos indígenas y, en algunos casos, los mineros eran indígenas.
- En Bolivia, los operadores de la minería artesanal tienen un gran poder político en las zonas donde existe potencial minero. Muchas veces, las cooperativas incluyen a personas de las comunidades para que puedan obtener algún tipo de beneficio de esta actividad [...] pero también generan problemas que no se abordan, como la prostitución, el blanqueo de dinero, etc.

planet**GOLD** project sites in Ecuador



Involucramiento de actores en el proyecto de Ecuador

- Coinciden en que la GIP puede ayudar a facilitar la participación de las partes interesadas.
 - Anteriormente han intentado convocar a diferentes actores, pero se enfrentaron a desafíos. Todavía necesitan mapear a los actores en el paisaje.
 - Grupos que podrían no tener voz...
 - Comunidades indígenas
 - Mujeres
 - Jóvenes
 - Trabajadores migrantes
 - Pequeños agricultores
 - Desafíos en la participación de actores clave
 - Identificar socios especializados en trabajar en JA/LA y que puedan implementar proyectos con éxito.
 - Reticencia de algunos actores, especialmente aquellos que suelen oponerse a la minería, como los grupos de conservación.
 - Grupos afectados por las actividades en el paisaje, incluyendo la MAPE:
 - Comunidades locales
 - Mineros de MAPE
 - Grupos con capacidad de influir en los resultados de las alianzas de paisaje
 - Líderes de las comunidades locales
 - Empresas del sector privado
-

A close-up, high-angle shot of a person's hands sifting through a large, dark, circular sieve over a body of water. The sieve is filled with a fine, light-colored material, possibly sand or silt, and a small fish is visible in the mesh. The background shows the rippling surface of the water. The overall tone is warm and golden.

Let's review

Taking a look back at some key concepts related to stakeholders...

STAKEHOLDER...

Stakeholders are relevant players who might **affect or be affected** in the landscape



Relevant stakeholders?

They can affect the landscape:

- What activities do they develop?
- Do they control key process and tools?
- Do they have power over the resources? (financial, communication, technical knowledge, etc.)

They can be affected by:

- Local communities
- Farmers
- People who use and rely on local resources



...they can be physically located **within** the landscape (internal) or **outside** of it (external).



Who are the **key stakeholders in the landscape that can help address both systemic issues and challenges of the landscape and those related to ASGM?**

Examples...

1. Territorial disputes
2. Systemic environmental damage
3. Deep-rooted social inequalities
4. Governance complexity
5. Landscape-scale sustainability

STAKEHOLDER MAPPING and ANALYSIS



MAPPING

ANALYSIS



BRAINSTORMING AND LISTING



#	Stakeholder types	Interests/benefits to the organization
1	Customers (and Users)	Revenues
2	Non-Customers	Future Revenues
3	Employees	Time, Knowledge, Labor
4	Former Employees	Social Support
5	Shareholders	Funding
6	Works Council	Internal Support Base
7	Clients Council	External Support Base
8	Supervisory Board / Board of Directors	Supervision
9	Government	Regulation, Infrastructure
10	Partners	Network
11	Politicians	Public Support
12	Management (Including CxO-roles)	Leadership
13	Competitors	Challenge
14	Press	Positive attention, based on facts
15	New talent	Future
16	Suppliers	Raw materials, products, services
17	Interest organizations	Influence

18	Public organizations	Appreciation, public support
19	Scientists	Confirmation, new insights, new knowledge
20	Creative Minds	Innovation
21	Local residents	Quality of life, acceptance
22	Supervisory instances	Quality control, identification, validation
23	Labor unions	Representation
24	Ngo's	Public Support
25	Social media Users (e.g. bloggers)	Feel with the spirit of the times, positive attention
26	Universities	Research, supply of new talent
27	Analysts	Financial valuation
28	Accountant	Approval of figures, transparency
29	Distribution partners	Reach, distribution network
30	Scientific association	Scientific identification/validation
31	Designers	Visual identity, appropriate design
32	Advisors/Consultants	Specialist knowledge, benchmarks
33	Children	Futureproofing

M5 📄 Engagement (fears and threats)

	A	B	C	D	E	F	G	H	I	J	
1											
2	This is an empty Stakeholder Mapping table. Feel free to add and remove columns of information.										
3											
4	Stakeholders 📄										
5	Tr Organization	Contact person in this organization	Role of contact person	Tr Short description of organization and/or contact person	Municipality/ Region/ Province	Group	Zone	Tr Phone number	Tr Email	Logos	Contact person f LP
6	Organization	Naam	Role of contact person		Plaats	Farmer/ S...	Natural Zo...	Phone number	Email	Bestand	Naar
7	Organization	Naam	Role of contact person		Plaats	Government	Combined ...	Phone number	Email	Bestand	Naar
8	Organization	Naam	Role of contact person		Plaats	NGO	Economic ...	Phone number	Email	Bestand	Naar
9	Organization	Naam	Role of contact person		Plaats	Private Se...		Phone number	Email	Bestand	Naar
10	Organization	Naam	Role of contact person		Plaats	Media Org...		Phone number	Email	Bestand	Naar
11	Organization	Naam	Role of contact person		Plaats	Research I...		Phone number	Email	Bestand	Naar
12	Organization	Naam	Role of contact person		Plaats	Donors/ Fi...		Phone number	Email	Bestand	Naar
13	Organization	Naam	Role of contact person		Plaats			Phone number	Email	Bestand	Naar
14	Organization	Naam	Role of contact person		Plaats			Phone number	Email	Bestand	Naar
15	Organization	Naam	Role of contact person		Plaats			Phone number	Email	Bestand	Naar
16	Organization	Naam	Role of contact person		Plaats			Phone number	Email	Bestand	Naar
17	Organization	Naam	Role of contact person		Plaats			Phone number	Email	Bestand	Naar
18	Organization	Naam	Role of contact person		Plaats			Phone number	Email	Bestand	Naar



RESPONSIBLE ASGMs

ARTISANAL FISHERIES

INDIGENOUS LIVELIHOODS

FOREST MANAGEMENT

REGENERATIVE TOURISM

SUSTAINABLE SOY

FOREST SCHOOL

CULTURAL CENTER

AGROECOLOGICAL MARKET

FOREST CONNECTIVITY

Looking at the map could

EXERCISE 1 - Mapping stakeholders



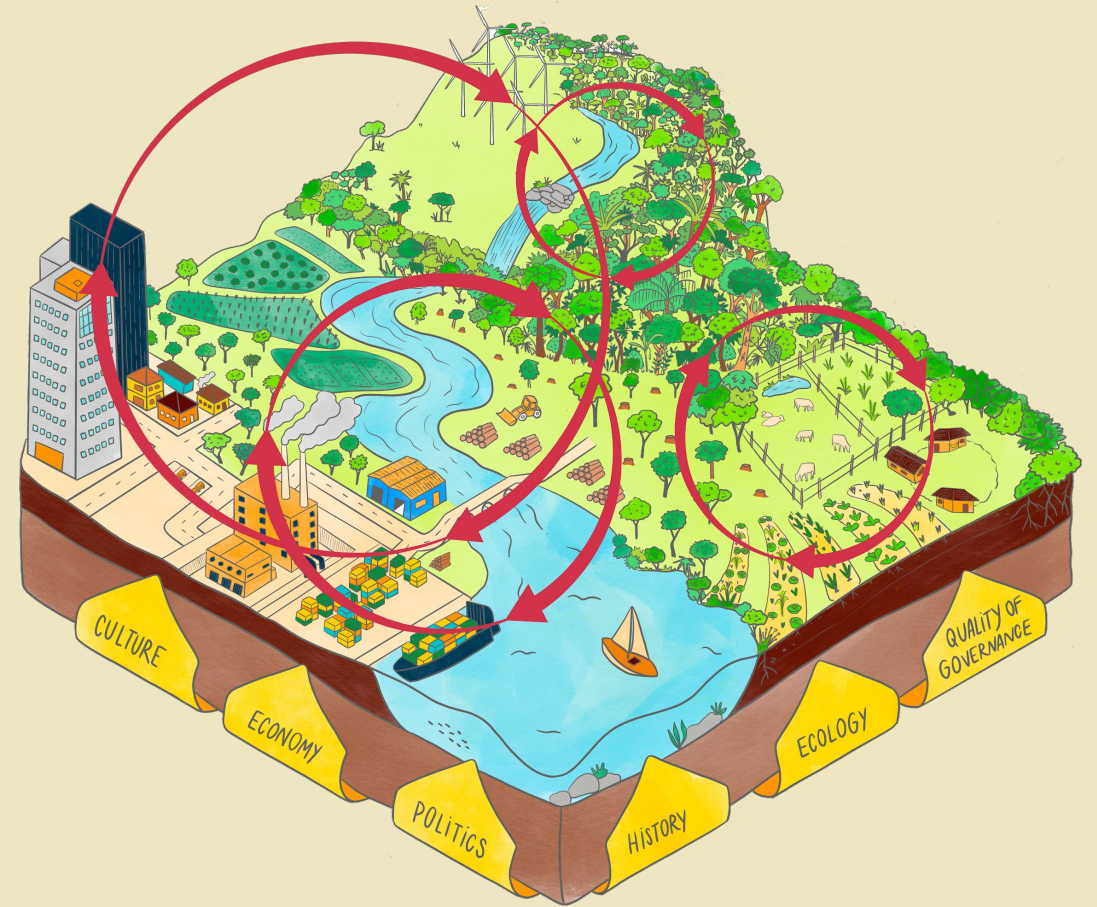
BREAKOUT GROUPS ACTIVITY

Considering the landscape you prioritized in the last session....

1. **Brainstorm and list** all actors you consider relevant—those who can affect or be affected by a landscape initiative and the ASGM sector
2. **Differentiate** sectors and interest groups...
3. **Organize** in the template

Stakeholder name	Sector or interest groups (Private, Public, Civil Society, Academia, Communities, indigenous peoples, other...)

Debrief. Anyone missing?



Break

3 minutes

STAKEHOLDER MAPPING and ANALYSIS



MAPPING

ANALYSIS



STAKEHOLDER ANALYSIS (SOME TOOLS)

**(RE)ORGANIZING AND
INTERPRETING THE LIST**

STAKEHOLDER ANALYSIS

Approach to **gain insight** into relevant stakeholders, their **characteristics & interrelationships** to **prioritize stakeholders for engagement**



NECESSITIES

**TYPE OF
POWER/
INFLUENCE**

**LEVEL OF
POWER**

RELATIONSHIPS

VULNERABILITY

**LEVEL OF
INTEREST**

**GROUP/
SECTOR**

**POTENTIAL TO
SUPPORT THE
PROCESS**

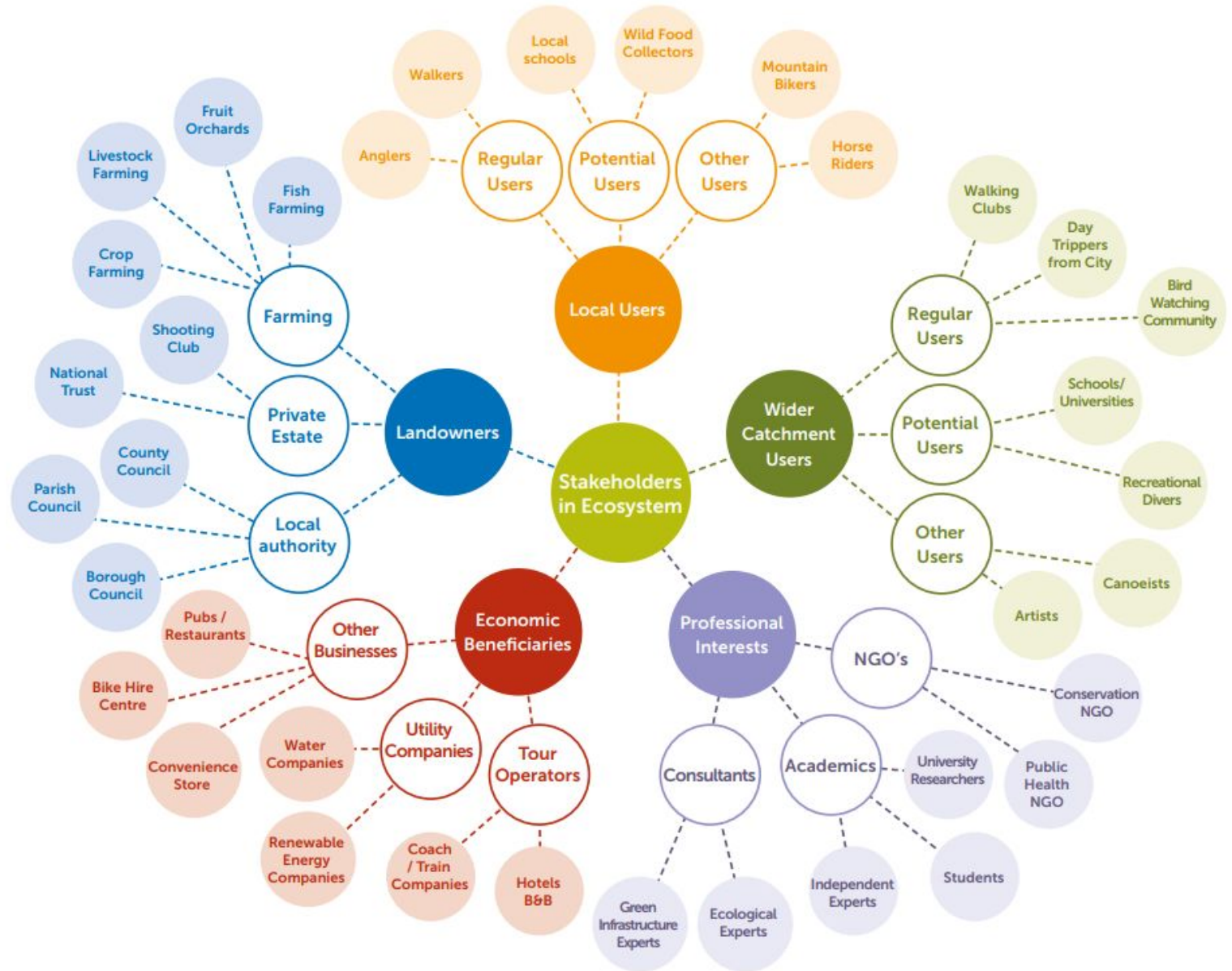
**INTEREST IN
PARTICIPATING
?**

LOCATION

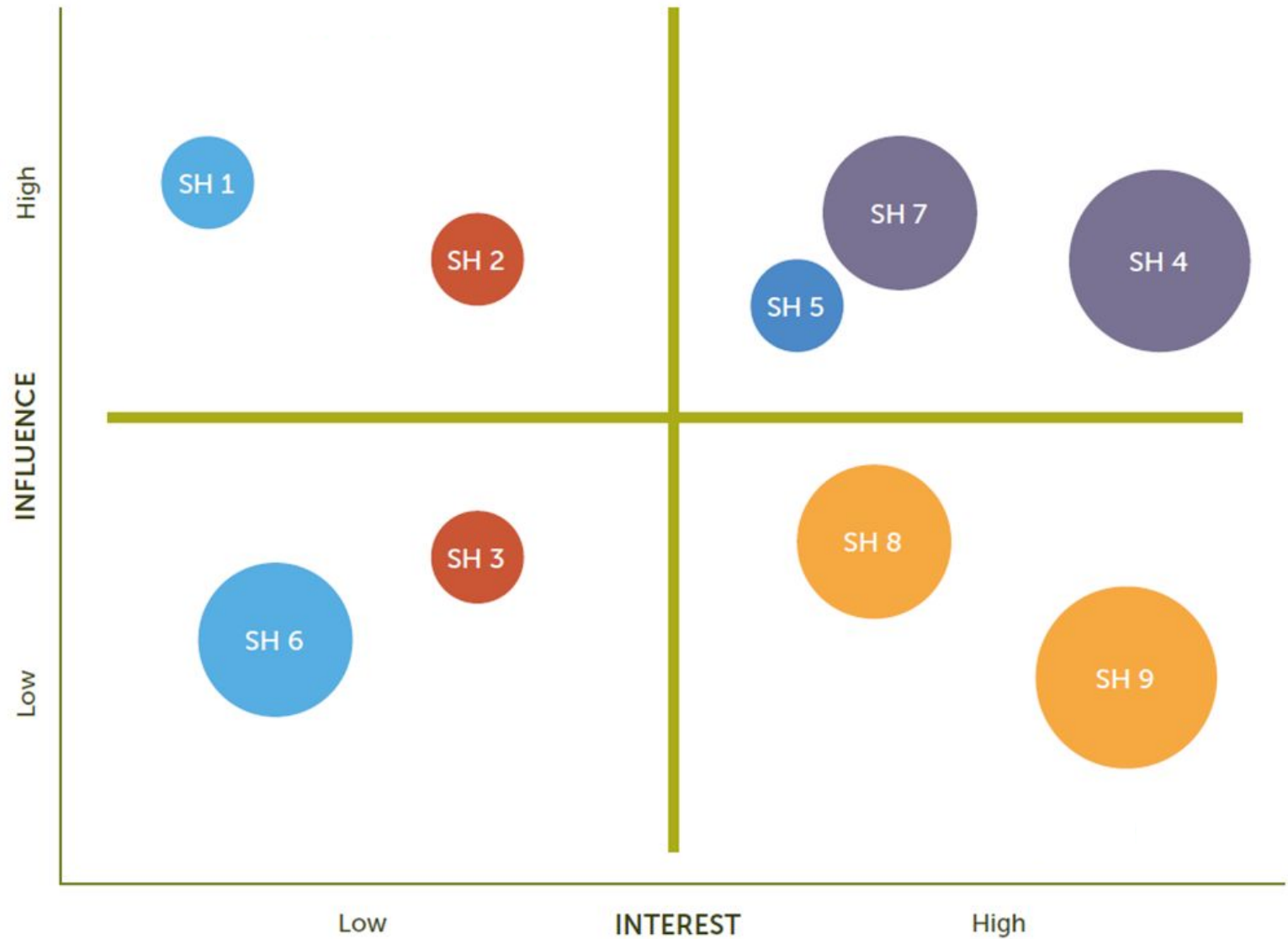


**POTENTIAL TO
BLOCK THE
PROCESS?**

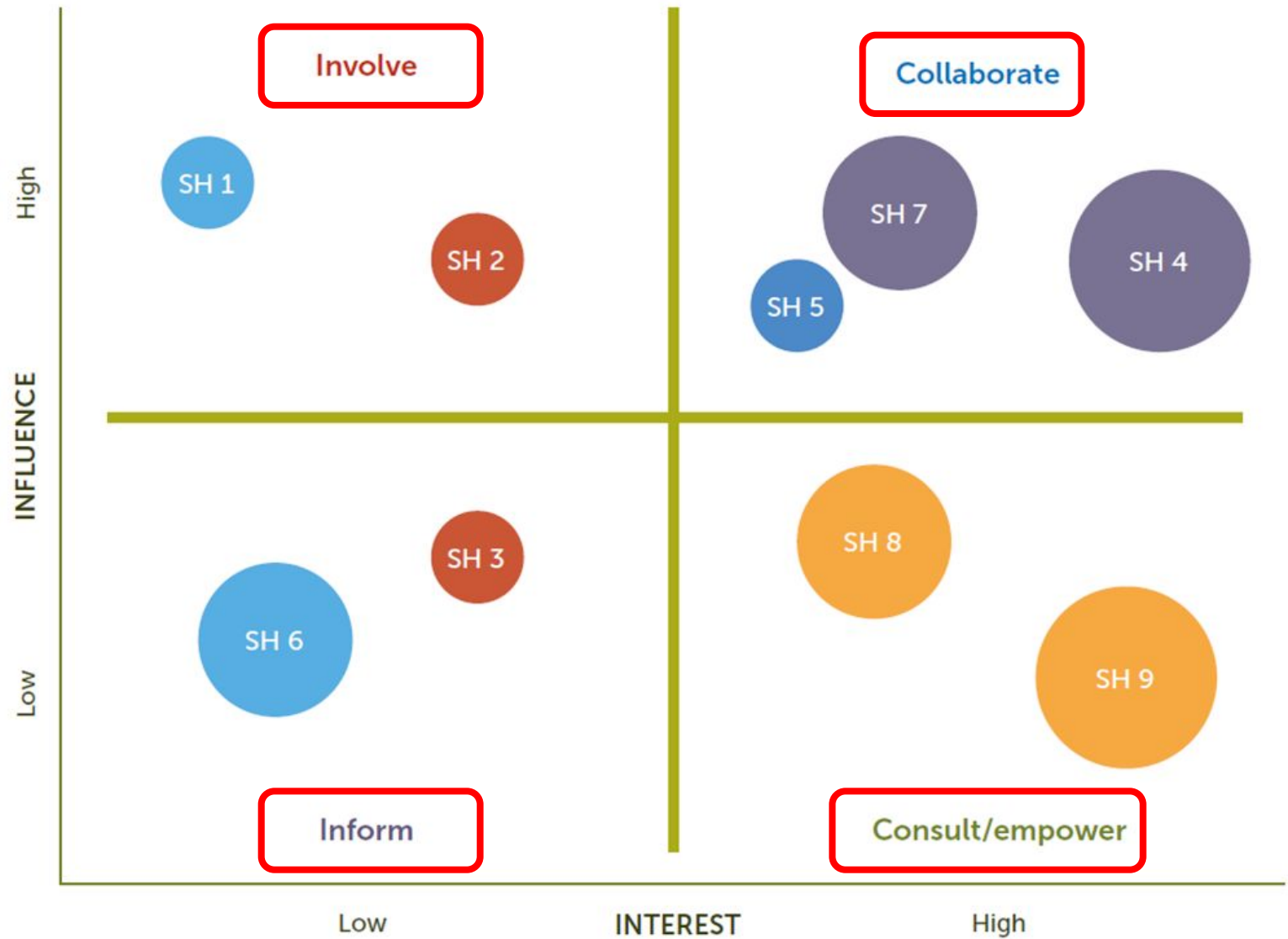
CLUSTERING AND GROUPING

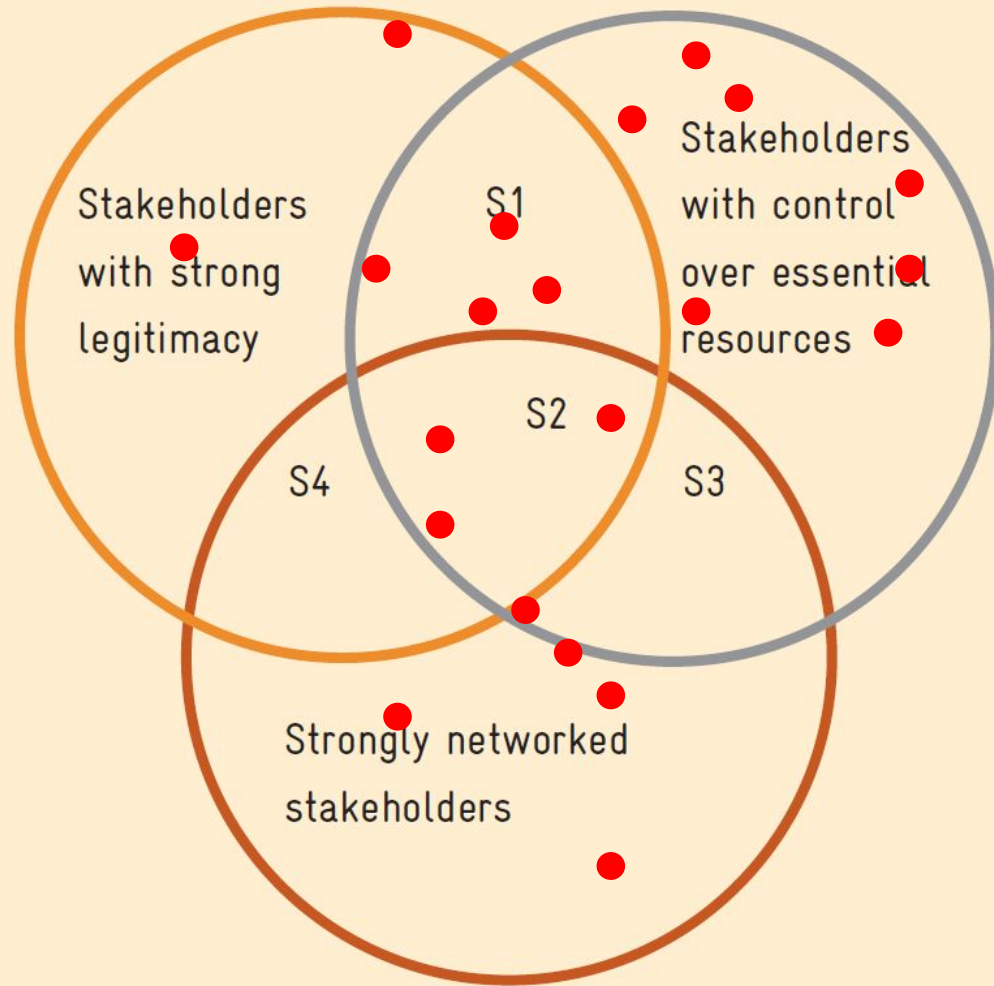


INFLUENCE AND INTEREST MATRIX



INFLUENCE AND INTEREST MATRIX



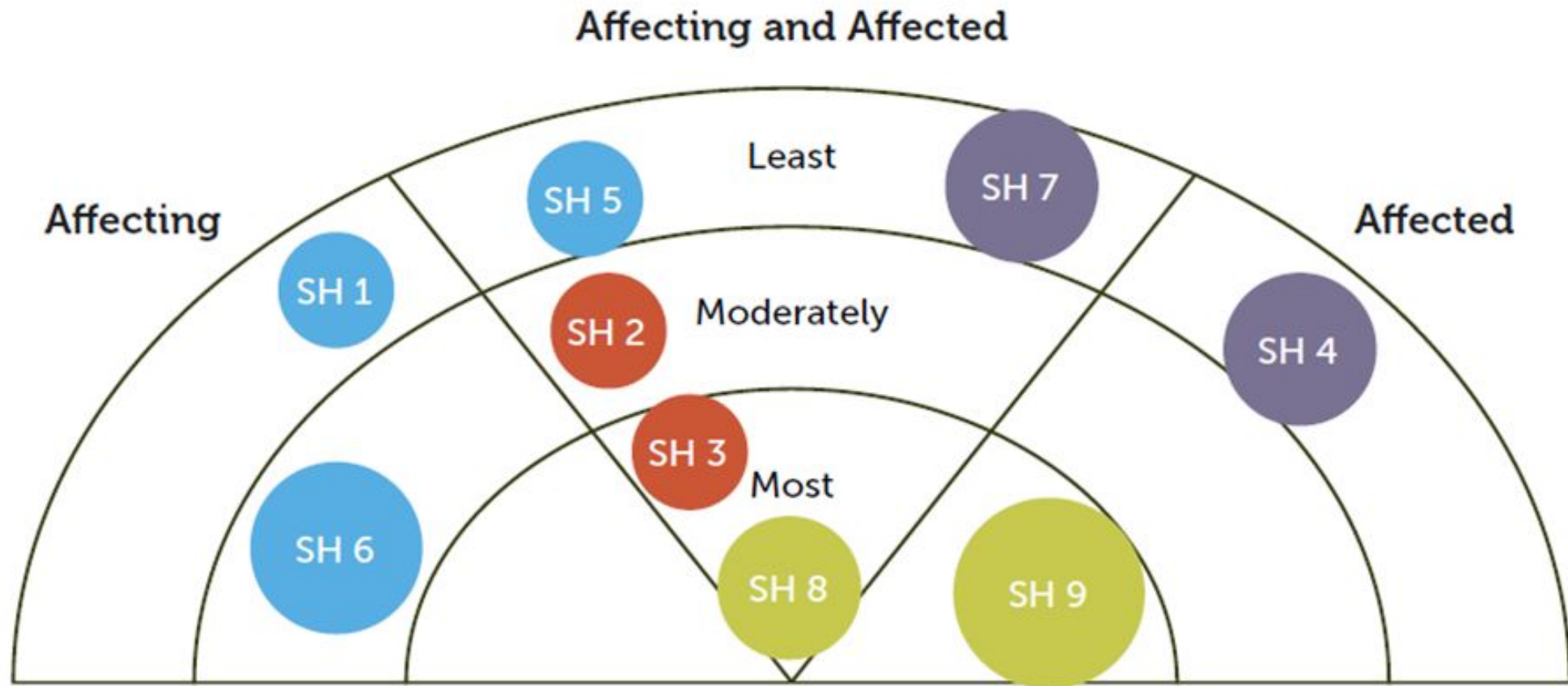


Graphic representation of key stakeholders

Stakeholders S1 to S4 are key stakeholders. They have at least two important core functions that distinguish them as outstanding.



Multi-stakeholder management:
Tools for Stakeholder Analysis: 10 building blocks
for designing participatory systems of cooperation
from the sector. Promoting participatory development in forest landscape restoration

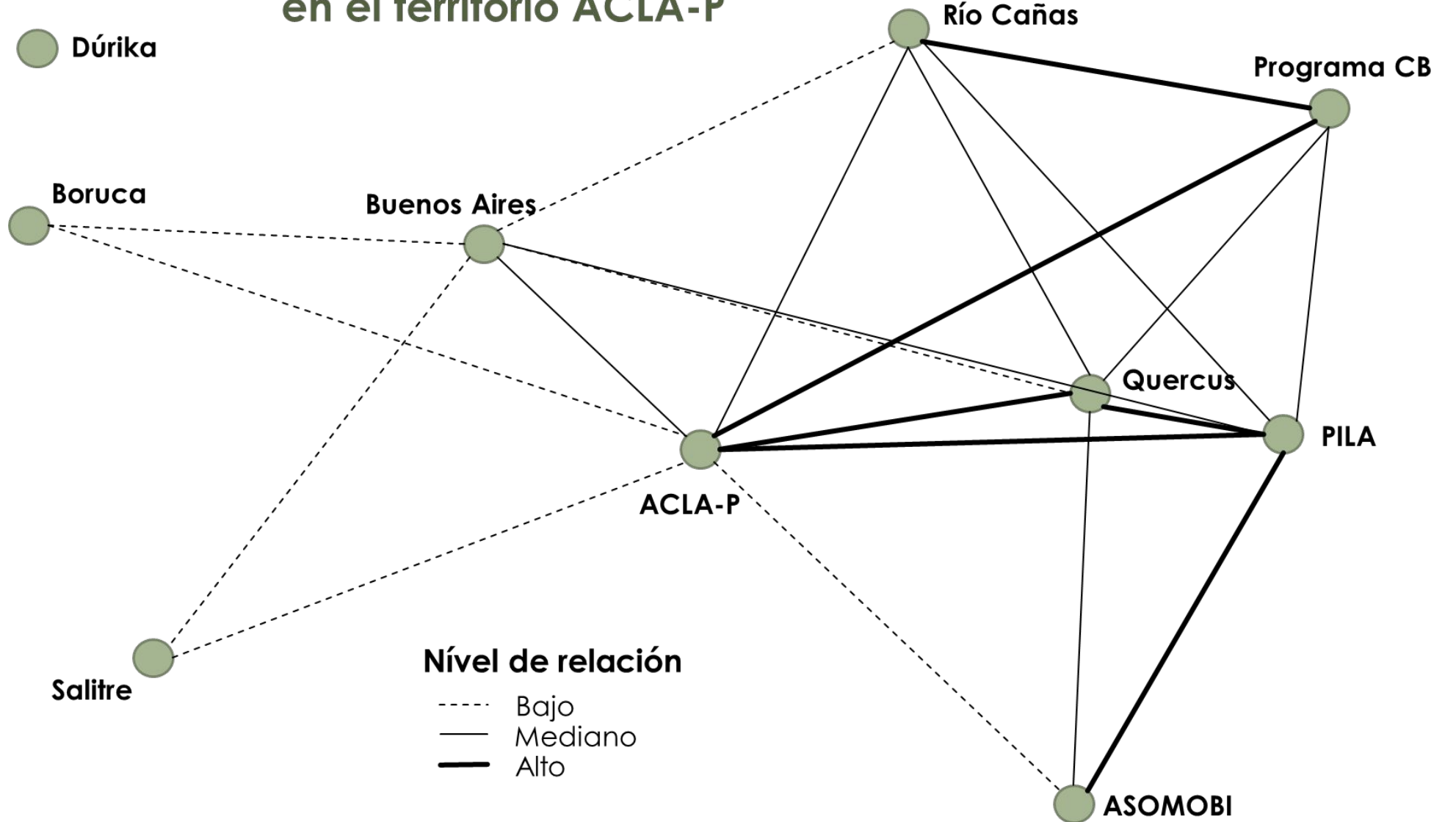


Stakeholder analysis based on position and need



Source: adapted from Retolaza 2011

Red de articulación de actores en el territorio ACLA-P

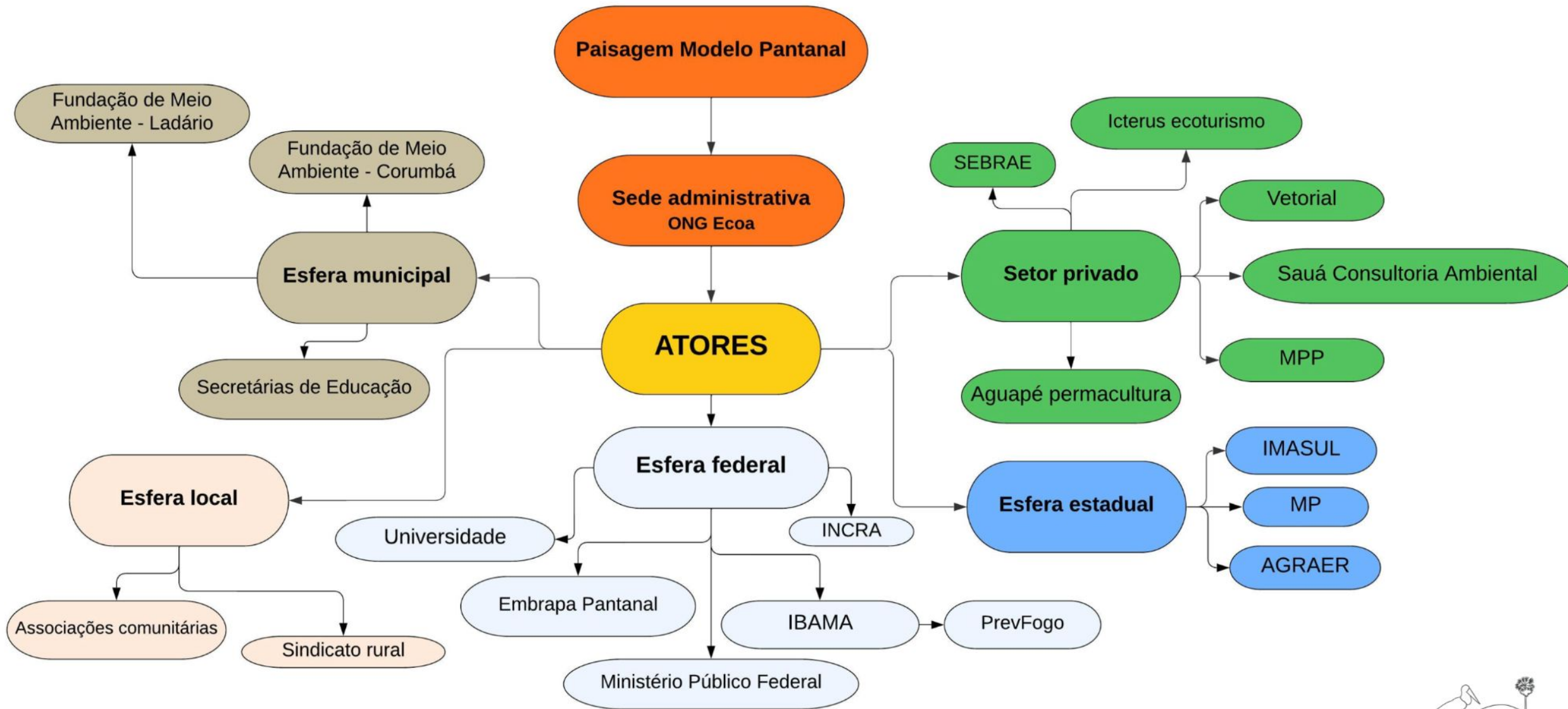


ASGM Example: Stakeholder Mapping and analysis in Ghana

Can inform an action
dialogue

STAKEHOLDER	ROLE, MISSION, AND VISION	IMPORTANCE AS AN AGENT OF CHANGE FOR FORMALISING ASM AND THE DIALOGUE
Water Resources Commission of Ghana	<p>To regulate and manage Ghana's water resources and coordinate related government policies.</p> <p>Provides a forum for integrating and collaborating with different interests, and is composed of 15 major government and non-government stakeholders involved in the water sector.</p>	The role and responsibility of the commission crosscuts the ASM sector and is composed of many government agencies that work directly or indirectly on ASM issues.
Civil Society and research institutions		
Ghana National Association of Small-Scale Miners	Mission: To bring licensed ASM and ASM associations under one umbrella with one common goal; to represent and support members in adhering to MinCom and EPA rules and regulations at the local level; to engage with the government and to advocate on behalf of ASM.	Meets quarterly with MinCom in Accra and at district offices to discuss issues. However there is potential to increase their participation and consultation with both the commission and other government agencies to ensure more effective ASM policy.
NGOs and research institutes (e.g. FON, Solidaridad and UMaT)	Mission: To advocate on behalf of ASM, undertake research and implement projects and programmes that support the development and formalisation of ASM.	<p>May advocate on behalf of and represent ASM as well as being involved in multiple research and development projects with ASM.</p> <p>Includes: University of Mines and Technology (UMaT), Association of Small-Scale Mining Africa Network, African Centre for Economic Transformation, Solidaridad, Friends of the Nation Ghana.</p>

Mapeamento de atores



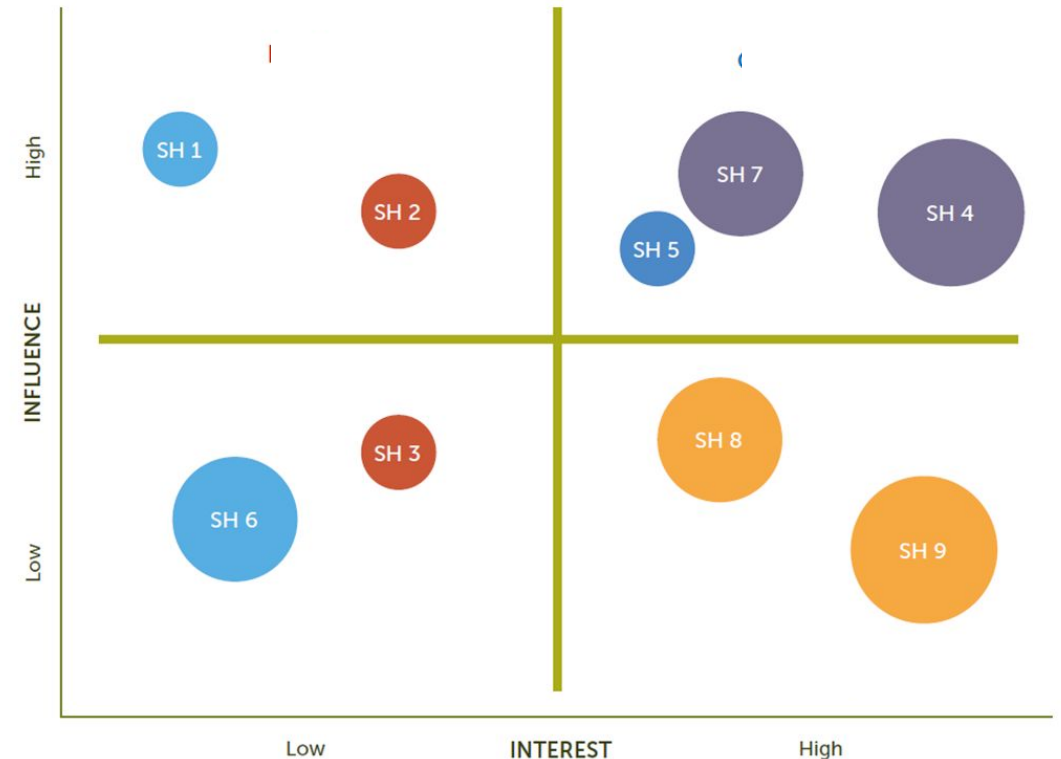
EXERCISE 2 - Stakeholder analysis

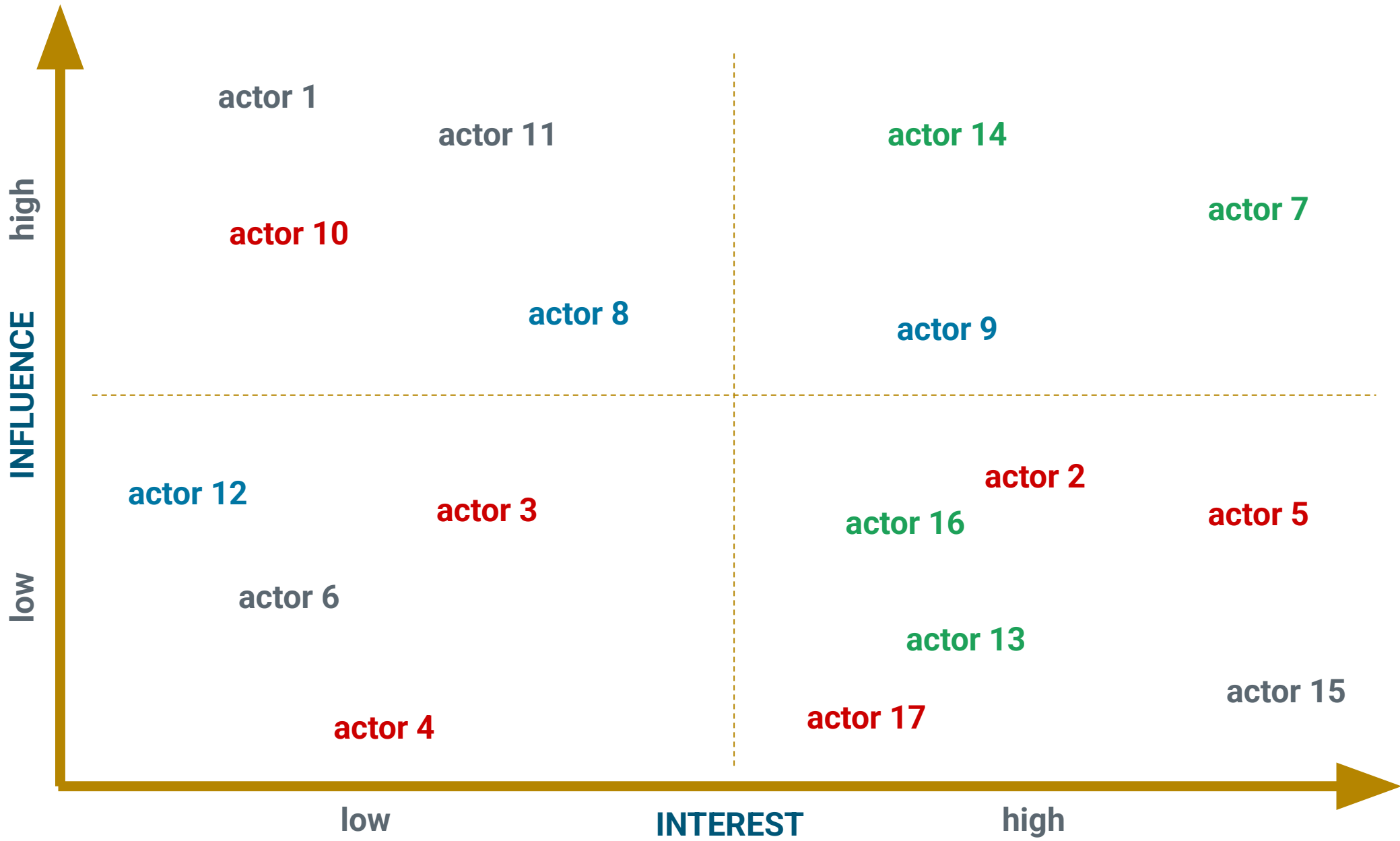


ACTIVITY: Influence of Interest Matrix

In your group and using the provided template.

1. **Situate actors you've listed in the previous exercise in the matrix according to their level of interest and influence in your landscape.**
 - You can differentiate stakeholders sectors or interest groups with **different text colors**
2. **After your group has completed the matrix, reflect together:**
 - What is your interpretation of the matrix?
 - How would you use this information strategically in the process of integrated landscape management?





Ideas?



STAKEHOLDER ENGAGEMENT

USING THE ANALYSIS FOR
ACTION...

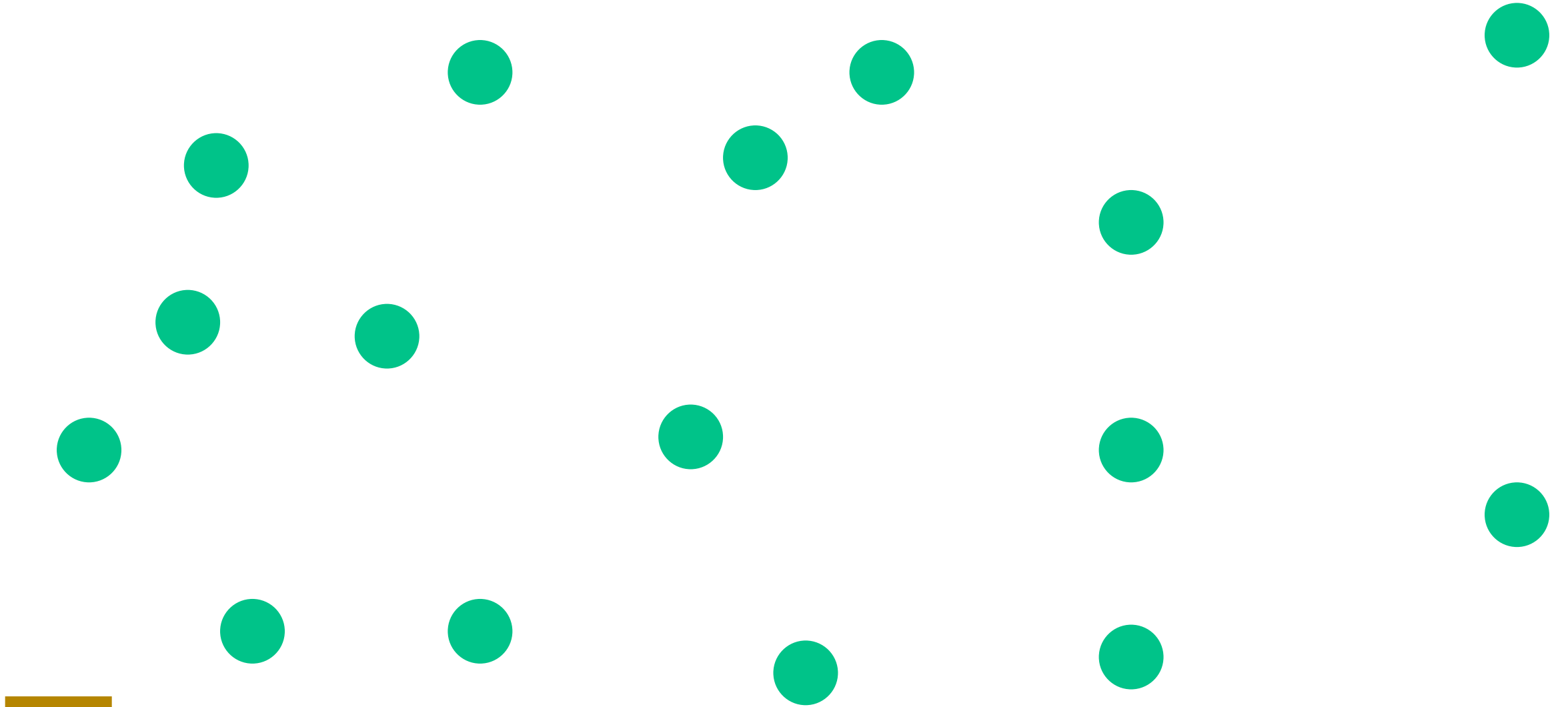
STAKEHOLDER ENGAGEMENT

Stakeholder engagement is the continuous process of involving and **including stakeholders** in an **action or decision-making process**

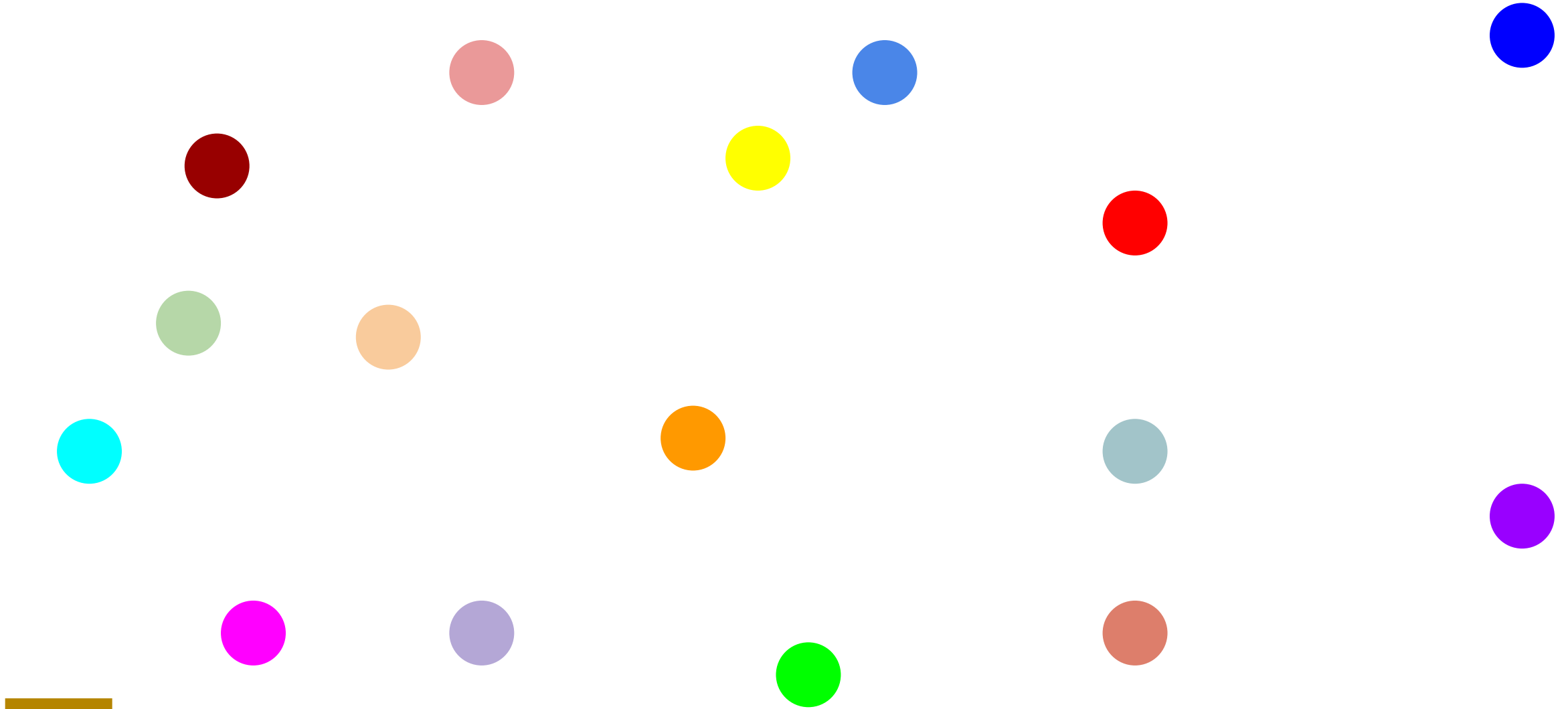
(USAID, 2018)



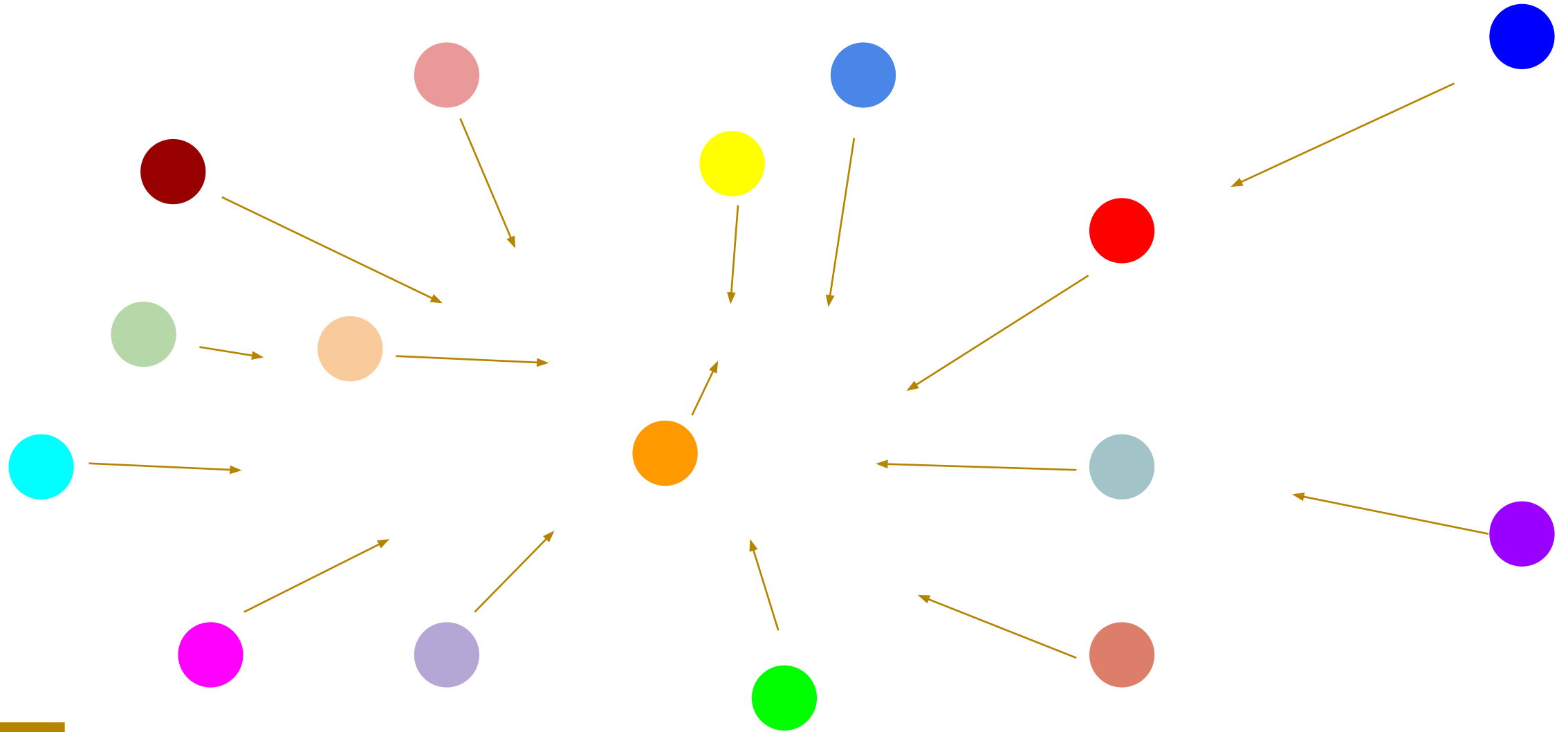
Before mapping and analyzing the stakeholders...



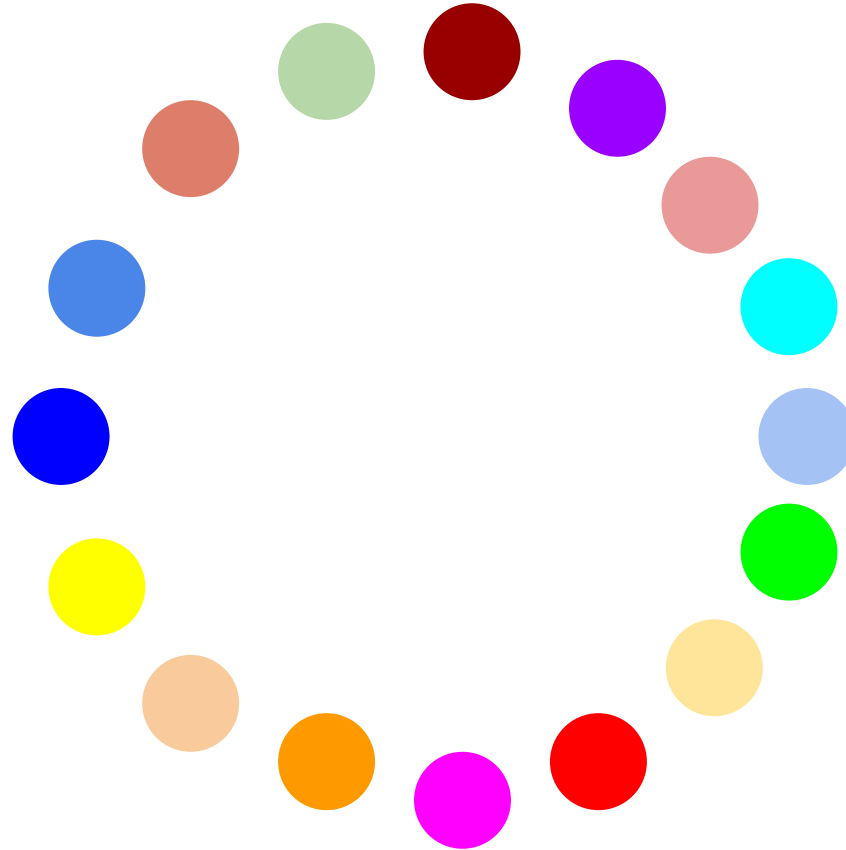
After the mapping and analysis of stakeholders...



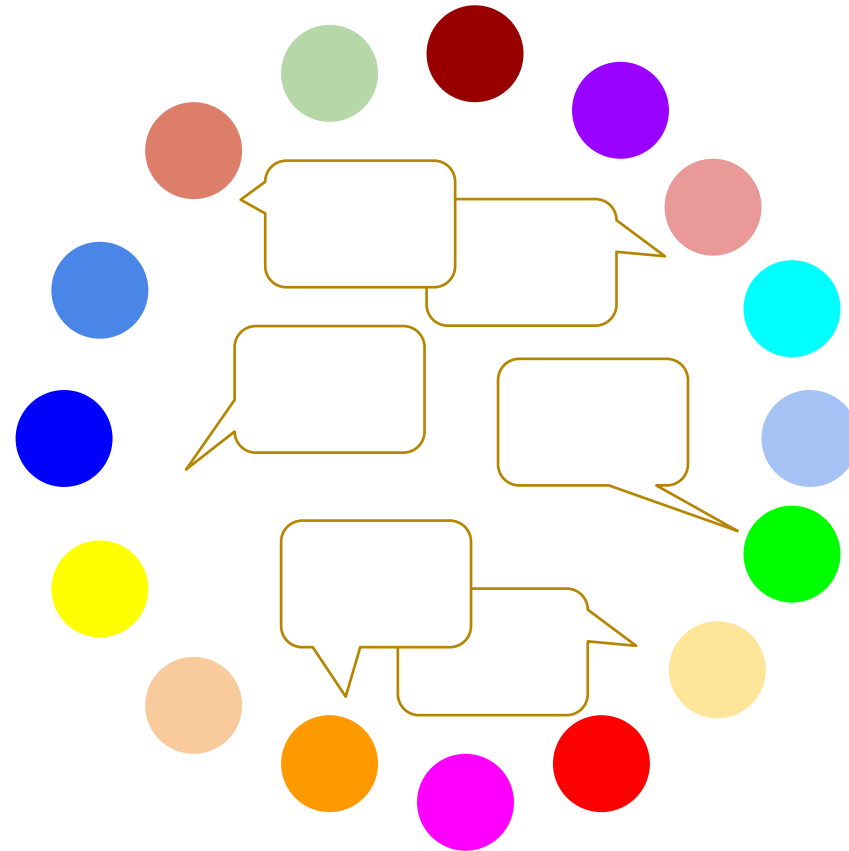
Stakeholder engagement





Stakeholder engagement



Stakeholder engagement



A continuous process with many steps...

- 
- Initial bilateral contact
 - Initial meetings with the group
 - Build trust and shared understandings
 - Identify common interests
 - Draft initial agreements
 - Craft common goals and plan
 - Continuous and long-term process of participation and action
- 





planetGOLD Stakeholder engagement strategy

Stakeholder	Position	Interest	Strategic approach	Engagement strategies	Who can help us
Government agency	Mover	Policy implementation Citizen participation	Build up	Include in the governance system Budget support/funding Provide technical assistance Dialogue and conflict facilitation	Research centres International experts Other govt agencies
Producer associations	Mover	Income generation Policy influencing	Build up	Provide technical assistance Access to funds/information Networking Dialogue and conflict facilitation	Local NGO Financial agencies Cooperatives Community leaders
Local NGO	Blocker	Project support Policy influencing	Break down	Oversight and complaint Debate forums and sensitisation Social audit by communities Alternative projects/proposals Dialogue and mediation	Donors INGOS Municipal authorities Community leaders
Local retailer	Floater	Income generation Social status	Bring in	Provide technical assistance Access to funding Access to alternative suppliers (cheaper/better) Dialogue and monitoring	Local NGOs Credit cooperatives Suppliers

So, what is the relation
between stakeholder
engagement and
landscape governance?

for next meeting...



The planetGOLD webinar series on **Landscape and Jurisdictional Approaches**

Next steps

- Recording from today will be available soon
- Next session **August 14, 2025**
- Please send comments and questions





Thanks and see you soon!

 mlevy@ecoagriculture.org



ecoagriculturepartners



Supported by:



Led by:



In partnership with:

